



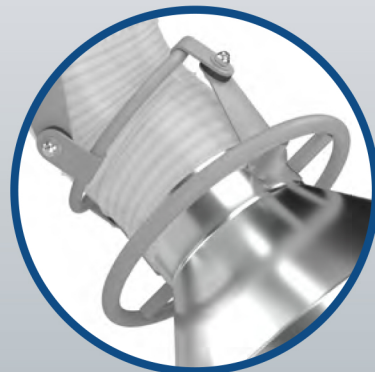
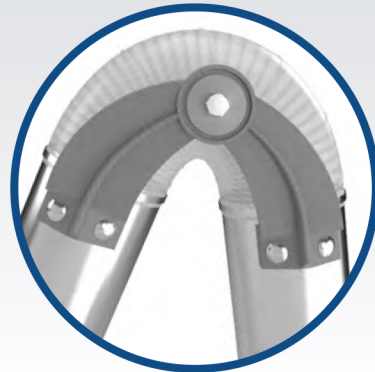
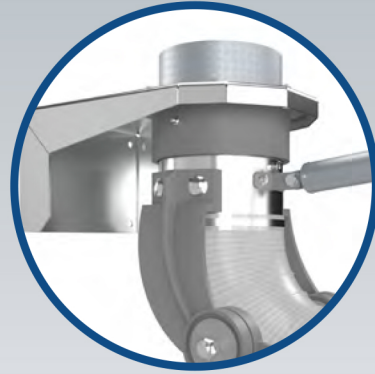
Industrial strength in capturing:

- BLENDING
- POURING
- DRY DUSTS
- MIXING
- CHEMICAL FUMES
- POWDERS



Applications:

Blending • Mixing • Pouring
Chemical Fumes and many more!



Features:

- industrial strength
- versatile design
- smooth tube construction
- external joints and supports
- hood and tube grab handles
- air diverter in the hood
- standard damper
- FDA Pur Antistatic hose

Benefits:

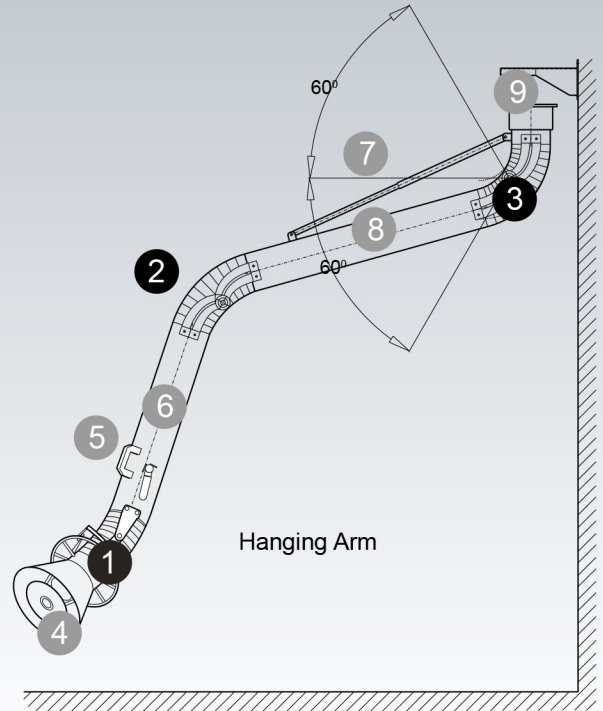
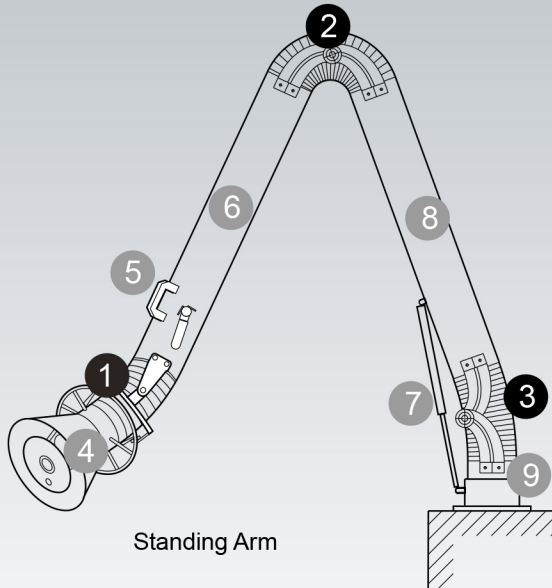
- long lasting life time
- user-friendly operation
- higher airflow performance
- easy to adjust and maintain
- simple positioning
- increased capture velocity
- damper with-in the price

Industrial Strength Construction

- 1 HOOD JOINT**
Hood easily positions forward, backward and sideways.
All external adjustments.
Flexible hose with gear clamps.

- 2 MIDDLE JOINT**
All external adjustments.
Flexible hose with gear clamps.
FDA Pur Antistatic hose.

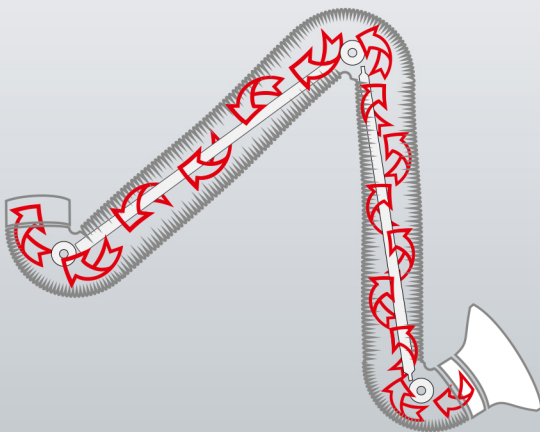
- 3 SOCKET JOINT**
Rotating swivel with safety stop, for 180° rotation. All external adjustments. Flexible hose with gear clamps.



- 4** 304 Stainless Steel Hood with surrounding grab handle.
- 5** Additional tube grab handle.
- 6** 304 Stainless Steel tube with standard damper.
- 7** Support spring or gas shock on the outside on both versions.

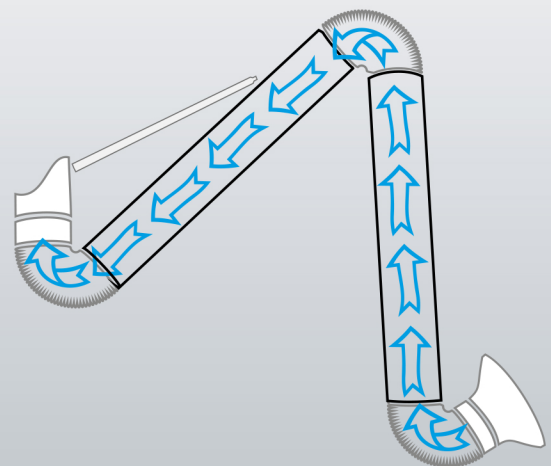
- 8** 304 Stainless Steel tube.
- 9** Swivel base with predrilled mounting holes

Comparison



Non IAP Fume Arm - Internal Components

- restricted airflow
- higher static pressure
- hard to clean
- build up on joint and components



IAP Fume Arm - External Components

- unrestricted airflow
- lower static pressure
- quick cleaning
- minimal build up

Technical Data

Arm Part #	Tube Diameter [inches]	Arm Length [Feet]	Hood Diameter [inches]	Ductwork Connection [inches]	Mounting Configuration	Typical Restrictions and Air Flow [inches wg]	Arm, Bracket and Hood Weight [lbs]
FA-0303	3	3	6	3	Hanging or Standing	1.4 @ 145 cfm	12.4
FA-0305	3	5	6	3	Hanging or Standing	1.4 @ 145 cfm	14.4
FA-0405	4	5	8	4	Hanging or Standing	1.2 @ 255 cfm	22.5
FA-0408	4	8	8	4	Hanging	1.2 @ 255 cfm	24.9
FA-0507	5	7	10	5	Hanging or Standing	1.1 @ 400 cfm	44.1
FA-0510	5	10	10	5	Hanging	1.1 @ 400 cfm	47.4
FA-0607	6	7	12	6	Hanging or Standing	0.8 @ 600 cfm	59.9
FA-0610	6	10	12	6	Hanging or Standing	0.8 @ 600 cfm	60.9
FA-0614	6	14	12	6	Hanging	0.8 @ 600 cfm	66.5
FA-0807	8	7	14	8	Hanging or Standing	0.7 @ 1050 cfm	79.4
FA-0810	8	10	14	8	Hanging	0.7 @ 1050 cfm	85
FA-0814	8	14	14	8	Hanging	0.7 @ 1050 cfm	95.1

* All hanging arms include Stainless Steel wall bracket and Stainless Steel ductwork connection.

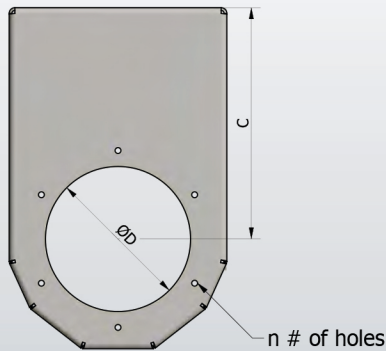
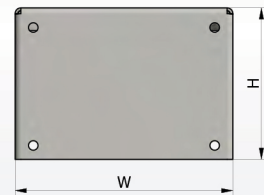
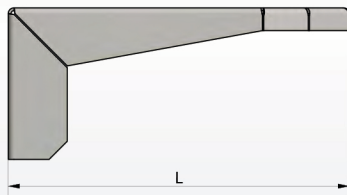
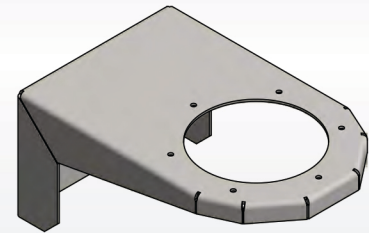
EQUIPMENT OPTIONS

Floor Stanchions

Light Kits

Wall Stanchions

Stainless Steel Hanging Mount Brackets



Bracket type [inches]	n	ØD [inches]	C [inches]	L [inches]	W [inches]	H [inches]	Weight [lb]
3	4	2.95	3.54	6.69	5.59	3.94	1.4
4	4	3.94	3.94	7.48	6.46	3.94	1.5
5	6	4.92	5.91	9.84	9.25	6.57	5.6
6	6	6.30	10.04	14.80	9.45	6.57	7.5
6L	6	6.30	12.48	17.01	12.99	9.84	11
8	8	8.07	12.95	19.00	12.80	9.72	13

Dealer Information / Contact:

RLKUNZ
AIR SYSTEM PROS

SINGLE SOURCE FOR
Fume / Welding / Dust Arms
Ambient Air Cleaners, Mobile Welding Units
Dust Collectors, Vehicle Exhaust, etc.

<https://www.rlkunz.com>