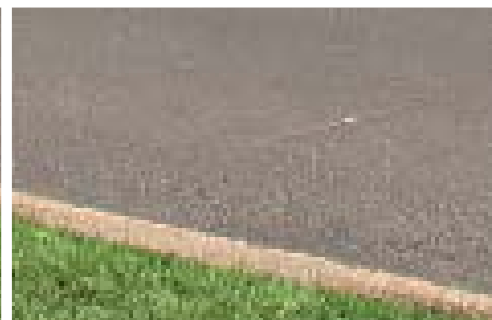
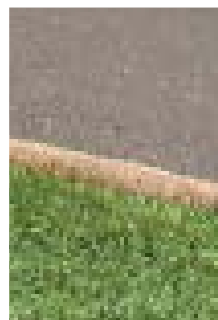
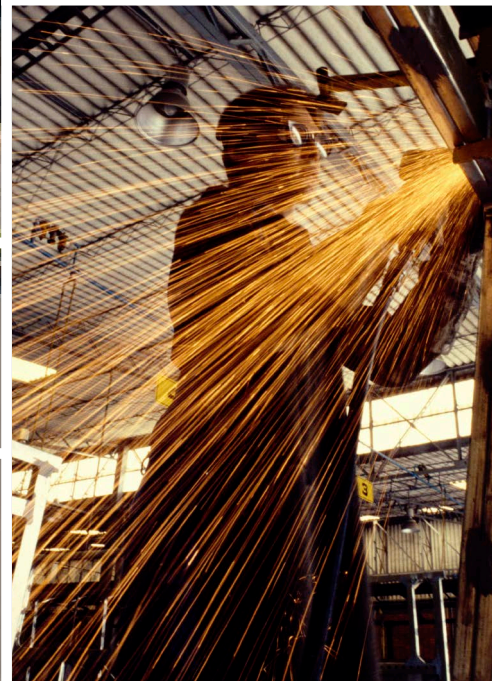
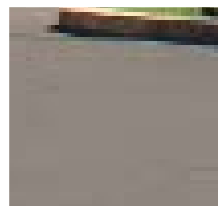
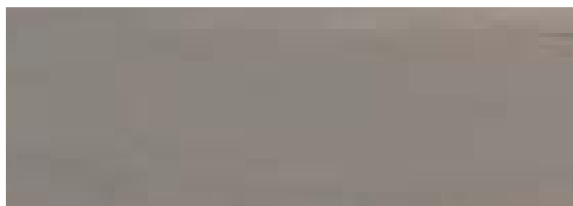
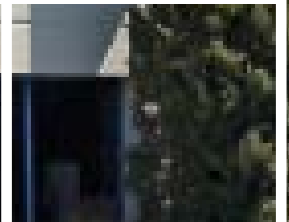


Product Catalog

2019



**INDUSTRIAL
AIR FILTRATION
EQUIPMENT**





MINI VAC II

- 105/210 CFM
- 1.0 HP x 2
- 120v/1P/60Hz
- Nanofiber MERV 15 Cartridge Filter



Welding



FRED JR

- 1200 CFM
- 1.5 HP
- 120v/1P/60Hz
- Nanofiber MERV 15 Cartridge Filter



Welding



FRED SR SELF-CLEANING

- 1200 CFM
- 1.5 HP
- 120v/1P/60Hz
- Nanofiber MERV 15 Cartridge Filter



Welding



FRED FUME

Paint Fume Extractors



FRED FUME

VOC Fume Extractors



FRED SR2 SELF-CLEANING

- 2500 CFM
- 5.0 HP
- 230/460/575V/3P/60Hz
- Nanofiber MERV 15 Cartridge Filter



Welding



FRED OVERSPRAY MASTER

- 1200 CFM
- 1.5 HP
- 120v/1P/60Hz
- MERV 11 pleated panel filters x 4
- 24"x 24"x2" carbon after-filter x 2



Paint



FRED CARBO

- 650 CFM
- 1.0 HP
- 120v/1P/60Hz
- Refillable and reversible carbon canisters



VOC



FRED ECO

- 800 CFM
- 1.0 HP
- 120v/1P/60Hz
- Nanofiber MERV 15 Cartridge Filter



Welding



FRED SR1 C | SR2 C

- 2500 CFM
- 5.0 HP
- 230/460/575V/3P/60Hz
- Nanofiber MERV 15 Cartridge Filter



Welding

ARTICULATED CAPTURE ARMS

BLOWERS AND BOOMS



EXTRACTOR ARM

- Flexible 6.5', 10' or 13' long, 6" diameter externally articulated capture arm with a suction hood
- Rugged steel base and lightweight aluminum pantograph tube construction



Welding
Soldering



RA-SERIES TELESCOPIC ARM

- Flexible 3.3' to 5.2' long, 6" diameter internally articulated telescopic arm with a suction hood
- Rugged steel construction



Welding
Soldering



- Blowers (1500 to 2500 CFM)
- 1.5, 3.0, 5.0 HP
- 120V/1P 230/460/575V/3P/60Hz
- Includes rotary motor starter



- Extension booms (5' or 10')



- Airhawk 15 Cartridge Dust collector
- 20 HP 6000 CFM fan
- Spark detection and suppression system to ventilate CNC plasma cutting table



Plasma Cutting

CARTRIDGE DUST COLLECTORS



- Airhawk 12 Cartridge Dust collector
- 50 HP blower with dust hopper floorstand configuration



Welding



Grinding



Sanding



- Airhawk 18 Cartridge Dust collector
- 10,000 CFM Blower
- Spark trap in ductwork
- Isolation valve in ductwork



Welding



Grinding



Sanding

ENVIRONMENTAL BOOTHS



- Custom 50' W x 16' D x 12' H sanding booth
- EBM 5,000 CFM booth collectors with HEPA Afterfilters and regain system



Welding



Grinding



Sanding



MINI DD - WGD

- 1200 CFM
- 1.0 HP
- 120v/1P/60Hz
- MERV 8 Paper Pleated Filter



Welding Grinding Deburring



DD 2X4 - WGD

- 1500 CFM
- 1.5 HP
- 120v/1P/60Hz
- Nanofiber MERV 15 Cartridge Filter



Welding Grinding Deburring



INDUSTRIAL DOWNDRAFT TABLES

- 4300 - 8600 CFM
- 5.0/7.5/10.0/15.0 HP
- Table sizes range from 3'x4' to 5'x10'
- Nanofiber MERV 15, Polyester MERV 11, MERV 17 HEPA Carbon Canister Filter



Welding Grinding Painting



TYPHOON WX-SERIES

- 1200 - 6500 CFM
- 3.0/5.0/10.0/15.0 HP
- 230/460/575V/3P/60Hz
- Mist Eliminator After-Filter



Grinding Sanding Deburring



TYPHOON

- 8000 - 12000 CFM
- 30/40 HP
- 230/460/575V/3P/60Hz
- #304 Stainless Steel Construction



Grinding Sanding Deburring



MONSOON

- 1200 - 6500 CFM
- 3.0/5.0/10.0/15.0 HP
- Table sizes range from 30"x38", 3x4, 3x6 and 3x8
- Mist Eliminator After-Filter



Grinding Sanding Deburring



DUST CONTROL BOOTH

- 4500 - 6000 CFM
- 7.5/10.0 HP
- 230/460/575V/3P/60Hz
- 6 Nanofiber MERV 15 Cartridge Filters



Welding
Grinding
Sanding



WET DUST COLLECTION BOOTH

- 1200 - 6500 CFM
- 3.0/5.0/10.0/15.0 HP
- 230/460/575V/3P/60Hz
- Mist Eliminator After-Filter



Deburring
Sanding



WS WELD BOOTH

- Customizable work surface
- Powder Coated Steel Construction
- Modular design
- Anti-flash UV strip curtain



Welding
Grinding



T SERIES

- 3000 - 7500 CFM
- 3/4 /2.0/3.0/5.0 HP
- 120V/1P 230/460/575V/3P/60Hz
- MERV 7 pleated pre-filters and MERV 15 multi-pocket bag filters



Welding
Grinding
Oil Mist



SELF-CLEANING AIRHAWK AMBIENT TOWER COLLECTOR

- 4500 - 6000 CFM
- 7.5/10.0 HP
- 230/460/575V/3P/60Hz
- 6 Nanofiber MERV 15 Cartridge Filters



Welding
Grinding
Sanding



AIRHAWK CARTRIDGE DUST COLLECTOR

- 1200 - 50,000 CFM
- Direct - A - Flow™ Inlet
- Vertical Cartridge Design
- From 2 to 92 Cartridge Filters



Welding
Grinding
Sanding



D MISTER

- 2000 - 4000 CFM
- 2 / 3 HP
- 230/460/575V/3P/60Hz
- Fiberglass media bags



Odor Control
Oil Mist



GREEN FILTER CLEANING MACHINE

- 2000 CFM
- 7.5 HP
- 230/460/575V/3P/60Hz
- 55 Drum capacity (Gallons)



Cartridge Filter Cleaning

LOCATIONS/CONTACT INFO

OFFICES

945 Lowndes Hill Rd.
Greenville, SC 29607

1031 Chuck Dawley Blvd.
Building A Suite 2
Mt. Pleasant, SC 29494

1448 Brawley School Road
Mooreville, NC 28117

200 Centreport Drive
Suite 340
Greensboro, NC 27409

4008 Barrett Drive
Suite 106
Raleigh, NC 27609

CONTACT US

Tel: 864.271.2590
Fax: 864.233.7083

Tel: 843.881.3244
Fax: 843.881.4153

Tel: 704.658.1509
Fax: 704.658.1593

Tel: 336.664.0007
Fax: 336.664.0053

Tel: 919.782.9096
Fax: 919.782.9093

FRED MINI-VAC II

COMPACT FUME EXTRACTOR



The FRED Mini-Vac II is the industry's most powerful, reliable, and convenient to use portable fume extractor - now with high/low modes for maximum performance. The dual motor design allows the welder to switch on just one motor for typical light duty work, and switch on a second motor for more demanding applications.

The ability to switch between high and low modes empowers the operator choose between a higher capture range and less time spent re-positioning with two motors running and a quieter running, lower capture range with one motor running.

Welding in the field or confined spaces requires a portable fume extractor that people will actually use.

Benefits:

- Protect your breathing zone by filtering harmful weld fumes with high efficiency nanofiber technology
- Meet and exceed North American safety standards, including OSHA, for weld fume capture-at-source

Features:

- Designed for light-medium duty welding
- Attaches quickly to MiG Fume Extraction Guns
- Lightweight, exceptionally portable design
- Nanofiber MERV 15 Filter Cartridge
- Magnetic nozzle base for secure nozzle placement
- Filter service indicator

Options:

- HEPA primary filter - 99.97% @ 0.3 micron
- Spunbond Polyester Filter Cartridge (washable)
- Auto on/off Fume Extraction Gun Kit

Standard Filter

NANOTECH XV

MERV 15 efficient cartridge filter captures particles at the submicron level, and surface-loading technology allows dust to be easily dislodged during cleaning with compressed air.



S-MV2-0001

EFFICIENCY:	MERV 15
FILTER MEDIA:	NANOFIBER
MEDIA AREA:	55 SQ.FT.
COATING:	FIRE RETARDANT
END CAP:	OPEN/CLOSED
CLEANING METHOD:	COMPRESSED AIR
MAX TEMP:	180° F / 82° C
FLANGE:	NONE

Optional Filters

POLYTECH XI

High strength, high efficiency (MERV 11) cartridge filter made from 100% spun-bond polyester that lowers costs, by allowing for water-based cleaning of captured contaminants.



S-MV2-0002

EFFICIENCY:	MERV 11
FILTER MEDIA:	SPUNBOND POLY
MEDIA AREA:	44 SQ.FT.
COATING:	FIRE RETARDANT
END CAP:	OPEN/CLOSED
CLEANING METHOD:	AIR + WATER WASH
MAX TEMP:	180° F / 82° C
FLANGE:	NONE

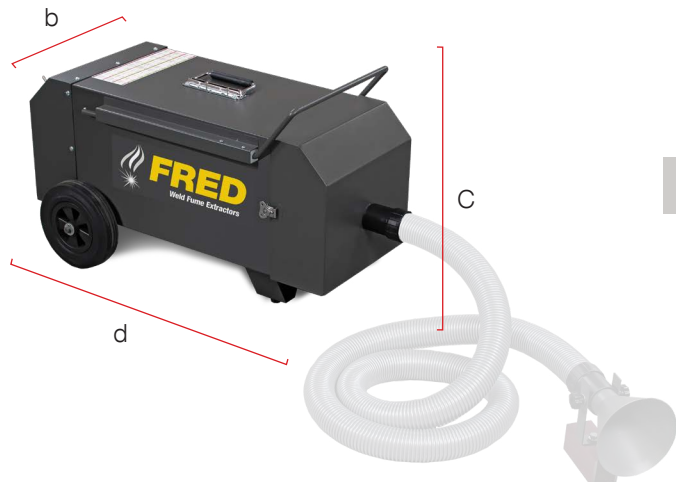
HEPA

MERV 17 efficient cartridge filter captures particles at the submicron level, it provides the highest level of filtration efficiency 99.97% at 0.3 micron.



S-MV2-0003

EFFICIENCY:	MERV 17
FILTER MEDIA:	HEPA
MEDIA AREA:	44 SQ.FT.
COATING:	NONE
END CAP:	OPEN/CLOSED
CLEANING METHOD:	DISPOSABLE
MAX TEMP:	180° F / 82° C
FLANGE:	NONE



IMPORTANT: If your equipment was purchased after November 15, 2018, a Replacement Filter Card, featuring filter details and simple instructions to easily order replacement filters, will be located on the filter door.

Dimensions **

Model	Filter Type	Cord Length (ft.)	Hose Length (ft.)	Product Dimensions (in.)		
				Width [b]	Height [C]	Length [d]
FRED Mini-Vac II compact welding fume extractor						
MINI-VAC2-010N1	Nano-Fiber	6	10	16.5	18.5	35.5
MINI-VAC2-010H1	HEPA	6	10	16.5	18.5	35.5
MINI-VAC2-010P1	Poly	6	10	16.5	18.5	35.5

** Product dimensions are based on base-models and may vary depending on selected product features. Please contact us for an accurate shipping quote.

Technical Specifications

Model	Motor (H.P.)	Airflow (CFM)	Input Power				Net Weighth (lbs.)	Noise @5ft (dB)
			Phase	(volts)	(hz)	(amps)		
FRED Mini-Vac II compact welding fume extractor								
MINI-VAC2-010N1	1.0HP x 2	105/210	1	120	60	16.0	48	68/77

HEAD OFFICE

945 Lowndes Hill Rd.
Greenville, SC 29607

1031 Chuck Dawley Blvd.
Building A Suite 2
Mt. Pleasant, SC 29494

1448 Brawley School Road
Mooresville, NC 28117

200 Centreport Drive
Suite 340
Greensboro, NC 27409

4008 Barrett Drive
Suite 106
Raleigh, NC 27609

FRED JR

PORTABLE FUME EXTRACTOR



With 10' capture arm
1200 - 1800 CFM



Keeping your worker's breathing zone safe requires a capture-at-source extractor they will actually use. Designed to be moved and positioned effortlessly, the FRED Jr. excels at removing weld fumes, dusts, and other airborne contaminants as small as 0.5 micron with our MERV 15 rated Nanofiber filter.

The capture arm's external articulation is key to easy positioning, as smoke and dust passes through the machine without contacting the swivel and pivot points of the arm. The high suction and capture velocity developed by the FRED Jr. allows operators to capture and filter dust and fumes further away from the hood than competitive models.

Benefits:

- Compact, portable, 120 volt, single phase
- Capture-at-source for cleaner air
- Complies with OSHA guidelines for controlling weld fumes

Features:

- Flexible 10' externally articulated capture arm
- 1.5HP TEFC motor producing 1200 CFM at the hood.
- 26" easy-to-service Nanofiber filter (MERV 15)
- Rotary starter with 15' power cord & casters

Options:

- Flexible externally articulated capture arm 6.5', 10', or 13'
- Automatic self-positioning, Fume Tracker™ capture arm
- 3.0 HP 1800 CFM High-Static Motor [230/460/575V 3PH]
- Odor Absorption Kits
- Minihelic Gauge
- Spunbond Polyester Filter Cartridge (washable)
- Afterfilter module, with HEPA Filter
- Hood mounted LED light kit



Primary Filters

NANOTECH XV

MERV 15 efficient cartridge filter captures particles at the submicron level, and surface-loading technology allows dust to be easily dislodged during cleaning with compressed air.



S-JR-26NF

EFFICIENCY: MERV 15
 FILTER MEDIA: NANOFIBER
 MEDIA AREA: 320 SQ.FT.
 COATING: FIRE RETARDANT
 END CAP: OPEN/CLOSED
 CLEANING METHOD: COMPRESSED AIR
 MAX TEMP: 180° F / 82° C
 FLANGE: NONE

POLYTECH XI

MERV 11 efficient cartridge filter captures particles at the submicron level, it provides the highest level of filtration efficiency 99.97% at 0.3 micron.



S-JR-26PT

EFFICIENCY: MERV 11
 FILTER MEDIA: SPUNBOND POLY
 MEDIA AREA: 169 SQ.FT.
 COATING: FIRE RETARDANT
 END CAP: OPEN/CLOSED
 CLEANING METHOD: AIR + WATER WASH
 MAX TEMP: 180° F / 82° C
 FLANGE: NONE

Secondary Filter

HEPA

High strength, high efficiency (MERV 17) cartridge filter made from 100% spun-bond polyester that lowers costs, by allowing for water-based cleaning of captured contaminants.



A-JR-HFM

EFFICIENCY: MERV 17
 FILTER MEDIA: HEPA
 MEDIA AREA: 24" x 24" x 11½"
 COATING: NONE
 END CAP: OPEN/CLOSED
 CLEANING METHOD: DISPOSABLE
 MAX TEMP: 175° F / 82° C
 FLANGE: NONE

IMPORTANT : If your equipment was purchased after November 15, 2018, a Replacement Filter Card, featuring filter details and simple instructions to easily order replacement filters, will be located on the filter door.

Dimensions **

Model	Arm Length (ft.)	Arm Diameter (in.)	Net Weight (lbs.)	Product Dimensions (in.)		
				Width [a]	Height [C]	Length [b]
FRED-JR with externally articulated capture arm						
FRED-JR	10	6	287	32.5	115	33
	13	6	292	32.5	128	33

** Product dimensions are based on base-models and may vary depending on selected product features. Please contact us for an accurate shipping quote.

Technical Specifications

Model	Motor (H.P.)	Power					Airflow (CFM)	Cord	Arm
		Phase (hz)	@120V (amps)	@230V (amps)	@460V (amps)	@575V (amps)		Length (ft.)	Length (ft.)
FRED-JR with externally articulated capture arm									
FRED-JR	1.5	1P/60Hz	13.2	---	---	---	1200	15	10/13
	3.0	3P/60Hz	---	7.1	3.7	3.2	1800	---	10/13

HEAD OFFICE

945 Lowndes Hill Rd.
 Greenville, SC 29607

1031 Chuck Dawley Blvd.
 Building A Suite 2
 Mt. Pleasant, SC 29494

1448 Brawley School Road
 Mooresville, NC 28117

200 Centreport Drive
 Suite 340
 Greensboro, NC 27409

4008 Barrett Drive
 Suite 106
 Raleigh, NC 27609

FRED SR

SELF-CLEANING PORTABLE FUME EXTRACTOR



With 10' capture arm
1200 - 1800 CFM



This professional grade fume extractor is the industry standard for eliminating smoke, dust and other unbreathables from the air. The powerful blower features a high face-velocity, removing particulate as small as 0.5 micron with our standard MERV 15 rated Nanofiber filter.

Our patented Injection Self-Cleaning System (ICS-360) reduces total cost of ownership by extending filter life expectancy, improving aggregate filter efficiency, and making routine service faster & easier.

Benefits:

- Automatic Filter Cleaning makes service easy
- Compact, portable and easy to operate
- Capture-at-source for cleaner air
- Complies with OSHA guidelines for controlling weld fumes

Features:

- Flexible 10' externally articulated capture arm
- ICS-360 Injection Self-Cleaning System
- 21" easy-to-service Nanofiber filter (MERV 15)
- Rotary starter with 15' power cord & casters

Options:

- Flexible externally articulated capture arm 6.5', 10', or 13'
- Automatic self-positioning, Fume Tracker™ capture arm
- 3.0 HP 1800 CFM High-Static Motor [230/460/575V 3PH]
- Odor Absorption Kits
- Minihelic Gauge
- Spunbond Polyester Filter Cartridge (washable)
- Afterfilter module, with HEPA Filter
- Hood mounted LED light kit



Primary Filters

NANOTECH XV

MERV 15 efficient cartridge filter captures particles at the submicron level, and surface-loading technology allows dust to be easily dislodged during cleaning with compressed air.



S-SR-21NF

EFFICIENCY: MERV 15
 FILTER MEDIA: NANOFIBER
 MEDIA AREA: 190 SQ.FT.
 COATING: FIRE RETARDANT
 END CAP: OPEN/CLOSED
 CLEANING METHOD: COMPRESSED AIR
 MAX TEMP: 180° F / 82° C
 FLANGE: NONE

POLYTECH XI

MERV 11 efficient cartridge filter captures particles at the submicron level, it provides the highest level of filtration efficiency 99.97% at 0.3 micron.



S-SR-21PT

EFFICIENCY: MERV 11
 FILTER MEDIA: SPUNBOND POLY
 MEDIA AREA: 105 SQ.FT.
 COATING: FIRE RETARDANT
 END CAP: OPEN/CLOSED
 CLEANING METHOD: AIR + WATER WASH
 MAX TEMP: 180° F / 82° C
 FLANGE: NONE

Secondary Filter

HEPA

High strength, high efficiency (MERV 17) cartridge filter made from 100% spun-bond polyester that lowers costs, by allowing for water-based cleaning of captured contaminants.



S-SR-1009

EFFICIENCY: MERV 17
 FILTER MEDIA: HEPA
 MEDIA AREA: 24" x 24" x 11½"
 COATING: NONE
 END CAP: OPEN/CLOSED
 CLEANING METHOD: DISPOSABLE
 MAX TEMP: 175° F / 82° C
 FLANGE: NONE

IMPORTANT : If your equipment was purchased after November 15, 2018, a Replacement Filter Card, featuring filter details and simple instructions to easily order replacement filters, will be located on the filter door.

Dimensions **

Model	Arm	Arm	Net	Product Dimensions (in.)		
	Length (ft.)	Diameter (in.)	Weight (lbs.)	Width [a]	Height [C]	Length [b]
FRED-SR with externally articulated capture arm						
FRED-SR	10	6	285	32.5	115	33
	13	6	290	32.5	128	33

** Product dimensions are based on base-models and may vary depending on selected product features. Please contact us for an accurate shipping quote.

Technical Specifications

Model	Motor (H.P.)	Power					Airflow (CFM)	Cord Length (ft.)	Arm Length (ft.)
		Phase (hz)	@120V (amps)	@230V (amps)	@460V (amps)	@575V (amps)			
FRED-SR with externally articulated capture arm									
FRED-SR	1.5	1P/60Hz	13.2	---	---	---	1200	15	10/13
	3.0	3P/60Hz	---	7.1	3.7	3.2	1800	---	10/13
	5.0	3P/60Hz	---	13.0	6.5	5.2	2500	---	10/13

HEAD OFFICE

945 Lowndes Hill Rd.
 Greenville, SC 29607

1031 Chuck Dawley Blvd.
 Building A Suite 2
 Mt. Pleasant, SC 29494

1448 Brawley School Road
 Mooresville, NC 28117

200 Centreport Drive
 Suite 340
 Greensboro, NC 27409

4008 Barrett Drive
 Suite 106
 Raleigh, NC 27609

FRED SR2

DUAL ARM FUME EXTRACTOR



With two 10'
capture arms
2500 CFM



This professional grade fume extractor is the industry standard for eliminating smoke, dust and other unbreathables from the air. A 2500 CFM, 5HP blower ensures a high face-velocity across two independently movable capture arms, removing particulate as small as 0.5 micron with our standard MERV 15 rated Nanofiber filter.

Our patented Injection Self-Cleaning System (ICS-360) reduces total cost of ownership by extending filter life expectancy, improving aggregate filter efficiency, and making routine service faster & easier.

Benefits:

- Automatic Filter Cleaning makes service easy
- Compact, portable and easy to operate
- Capture-at-source for cleaner air
- Complies with OSHA guidelines for controlling weld fumes

Features:

- Dual, 10" Externally Articulated Extraction Arms
- ICS-360 Injection Self-Cleaning System
- 21" easy-to-service Nanofiber filter (MERV 15)
- Rotary starter with 15' power cord & casters

Options:

- Flexible externally articulated capture arm 6.5', 10', or 13'
- Automatic self-positioning, Fume Tracker™ capture arm
- Odor Absorption Kits
- Minihelic Gauge
- Spunbond Polyester Filter Cartridge (washable)
- Afterfilter module, with HEPA Filter
- Hood mounted LED light kit



Safety note : units are not designed to collect possible explosive dusts such as aluminum, magnesium, wood chips or similar.

DO NOT COLLECT EXPLOSIVE DUSTS IN THIS UNIT.

Dimensions **

Model	Arm	Arm	Net	Product Dimensions (in.)		
	Length (ft.)	Diameter (in.)	Weight (lbs.)	Width [a]	Height [C]	Length [b]
FRED-SR2 Portable Fume Collector with two externally articulated capture arms						
FRED-SR2	10 (x2)	6 (x2)	297	32.5	102	33
	13 (x2)	6 (x2)	302	32.5	111	33

** Product dimensions are based on base-models and may vary depending on selected product features. Please contact us for an accurate shipping quote.

Technical Specifications

Model	Motor (H.P.)	Power					Airflow (CFM)	Cord Length (ft.)	Arm Length (ft.)
		Phase (hz)	@120V (amps)	@230V (amps)	@460V (amps)	@575V (amps)			
FRED-SR2 Portable Fume Collector with two externally articulated capture arms									
FRED-SR2	5.0	3P/60Hz	---	13.0	6.5	5.0	2500	---	10/13

Primary Filters

NANOTECH XV

MERV 15 efficient cartridge filter captures particles at the submicron level, and surface-loading technology allows dust to be easily dislodged during cleaning with compressed air.



S-SR-21NF

EFFICIENCY: MERV 15
 FILTER MEDIA: NANOFIBER
 MEDIA AREA: 190 SQ.FT.
 COATING: FIRE RETARDANT
 END CAP: OPEN/CLOSED
 CLEANING METHOD: COMPRESSED AIR
 MAX TEMP: 180° F / 82° C
 FLANGE: NONE

POLYTECH XI

MERV 11 efficient cartridge filter captures particles at the submicron level, it provides the highest level of filtration efficiency 99.97% at 0.3 micron.



S-SR-21PT

EFFICIENCY: MERV 11
 FILTER MEDIA: SPUNBOND POLY
 MEDIA AREA: 105 SQ.FT.
 COATING: FIRE RETARDANT
 END CAP: OPEN/CLOSED
 CLEANING METHOD: AIR + WATER WASH
 MAX TEMP: 180° F / 82° C
 FLANGE: NONE

Secondary Filter

HEPA

High strength, high efficiency (MERV 17) cartridge filter made from 100% spun-bond polyester that lowers costs, by allowing for water-based cleaning of captured contaminants.



S-SR-1009

EFFICIENCY: MERV 17
 FILTER MEDIA: HEPA
 MEDIA AREA: 24" x 24" x 11½"
 COATING: NONE
 END CAP: OPEN/CLOSED
 CLEANING METHOD: DISPOSABLE
 MAX TEMP: 175° F / 82° C
 FLANGE: NONE

HEAD OFFICE

945 Lowndes Hill Rd.
 Greenville, SC 29607

1031 Chuck Dawley Blvd.
 Building A Suite 2
 Mt. Pleasant, SC 29494

1448 Brawley School Road
 Mooresville, NC 28117

200 Centreport Drive
 Suite 340
 Greensboro, NC 27409

4008 Barrett Drive
 Suite 106
 Raleigh, NC 27609

FRED CARBO

PORTABLE VOC FUME EXTRACTOR



With 10' capture arm
650 CFM



Volatile Organic Compounds (VOCs) fumes and odors present a serious workplace hazard that need to be captured and filtered with a portable fume extractor. The Fred Carbo is designed to extract VOC fumes and odors and prevent them from entering an operator's breathing zone.

The FRED Carbo's high porosity activated carbon granules are specially designed to adsorb most industrial VOC fumes. The carbon cartridge is reversible allowing you to utilize 100% of the available media to remove airborne fumes and is available in five standard weight configurations.

The extractor arm's pantograph style articulation ensures ultra-smooth repositioning and protects the arm's components from wear and tear. The high performance blower develops a powerful face velocity to ensure fumes are eliminated from the workspace.

Features:

- Flexible 10' externally articulated capture arm
- 1.0 HP TEFC motor producing 650 CFM at the hood
- Refillable and reversible carbon canisters
- 15" power cord & casters

Benefits:

- Compact, portable, 120 volt, single phase
- Capture-at-source for cleaner air
- Complies with OSHA guidelines for controlling VOCs

Carbon Filter

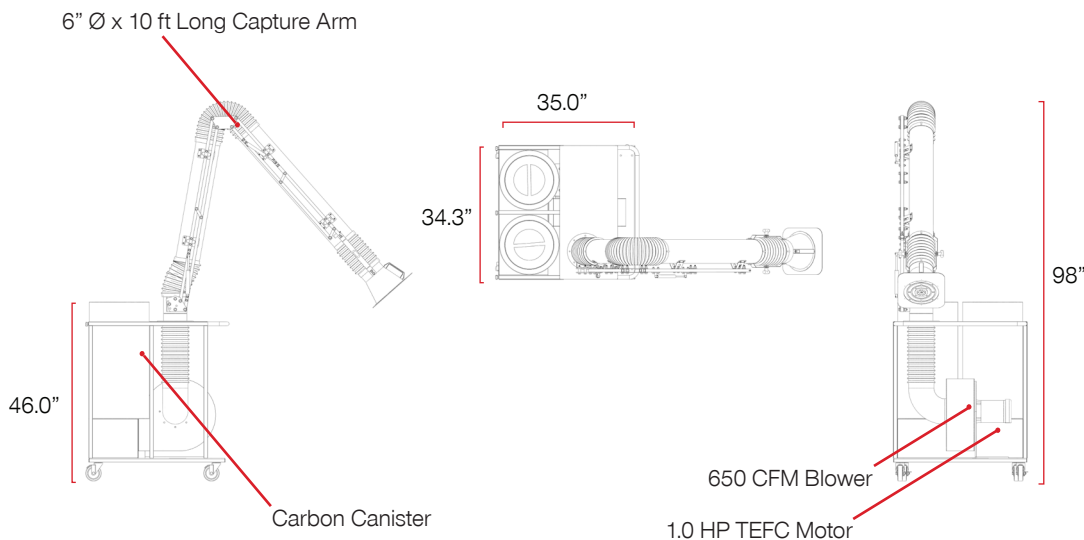
CARBOTECH 75

Reusable steel canister filled with 75 lbs of activated carbon to filter VOC fumes and odors. Double the filter life by flipping the canister top-to-bottom, allowing for adequate contaminant distribution through the media.



S-CCX-75R

WEIGHT: 75 LBS
 FILTER MEDIA: ACTIVATED CARBON
 PREFILTER MEDIA THICKNESS: 320 SQ.FT.
 COVER: 3/4" ANTIBACTERIAL
 END CAP: TWIST LOCK REMOVABLE
 CLEANING METHOD: COMPRESSED AIR
 MAX TEMP: 175° F / 80° C



Dimensions **

Model	Arm Length (ft.)	Arm Diameter (in.)	Product Dimensions (in.)		
			Width [a]	Height [C]	Length [b]
FRED CARBO VOC Extractor with externally articulated manual capture arm					
FRED CARBO	10	6	34.3	98	35
	13	6	34.3	98	35

** Product dimensions are based on base-models and may vary depending on selected product features. Please contact us for an accurate shipping quote.

Technical Specifications

Model	Motor (H.P.)	Power		Airflow (CFM)	Carbon
		Phase (hz)	@120V (amps)		Capacity (lbs.)
FRED CARBO VOC Extractor with externally articulated manual capture arm					
FRED CARBO	1.0	1P/60Hz	16	650	150

HEAD OFFICE

945 Lowndes Hill Rd.
Greenville, SC 29607

1031 Chuck Dawley Blvd.
Building A Suite 2
Mt. Pleasant, SC 29494

1448 Brawley School Road
Mooresville, NC 28117

200 Centreport Drive
Suite 340
Greensboro, NC 27409

4008 Barrett Drive
Suite 106
Raleigh, NC 27609

FRED OVERSPRAY MASTER

PORTABLE PAINT FUME EXTRACTOR



The FRED Overspray Master™ by Diversitech is a portable paint fume control system that is designed to capture and filter overspray from touch up painting. The compact design saves time and money by allowing touch paint work to be done safely where required.

The portable paint fume extraction unit includes a hood mounted paint pocket arrestor prefilter, four MERV 11 primary filters and 2 extruded carbon afterfilters for VOC fumes. The filters in the unit comply with the **NESHAP 319 standard for toxic chromate coatings** and primers, commonly found in aerospace painting applications.

The Overspray Master comes with a 10' XA2 Series capture arm, with external pantograph style articulation ensuring ultra-smooth repositioning and protecting the arm's components from wear and tear. Available arm lengths include 6.5', 10' 13' and dual arm configurations.

Features:

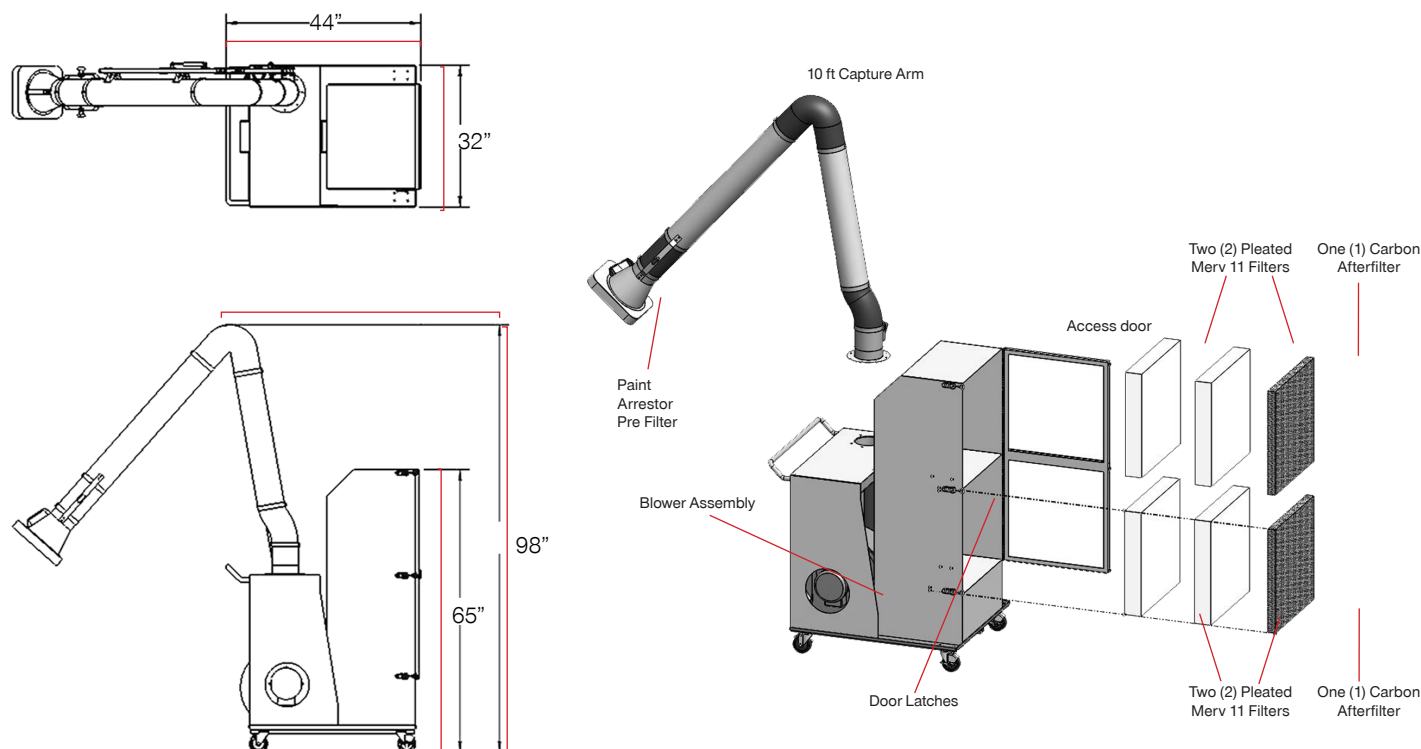
- Flexible 10' externally articulated capture arm
- 1200 CFM of Airflow
- 1.5 HP, 120v/1/60hz blower
- 1 x Paint pocket filter on hood
- 4 x MERV 11 pleated panel filters
- 2 x 24"x 24"x2" carbon afterfilter
- 15" power cord & casters

Benefits:

- Complies with **NESHAP 319**
- Capture-at-source for cleaner air
- Compact, portable, and easy to operate

Options:

- Explosion proof motor and starter
- 6.5', 10' or 13' capture arm



Dimensions **

Model	Arm Length	Arm Diameter	Arm Weight	Cabinet Weight	Total Weight	Product Dimensions (in.)		
	(ft.)	(in.)	(lbs.)	(lbs.)	(lbs.)	Width [a]	Height [C]	Length [b]
FRED OVERSPRAY MASTER with externally articulated manual capture arm								
FOM	10	6	55	416	471	32	98	44
	13	6	55	416	471	32	98	44

** Product dimensions are based on base-models and may vary depending on selected product features. Please contact us for an accurate shipping quote.

Technical Specifications

Model	Motor (H.P.)	Power		Airflow (CFM)	Primary	After
		Phase (hz)	@120V (amps)		Filter Type	Filter Type
FRED OVERSPRAY MASTER with externally articulated manual capture arm						
FOM-6	1.5	1P/60Hz	13.2	1200	Merv 11 (4)	Carbon (2)
FOM-10	1.5	1P/60Hz	13.2	1200	Merv 11 (4)	Carbon (2)
FOM-13	1.5	1P/60Hz	13.2	1200	Merv 11 (4)	Carbon (2)

HEAD OFFICE

945 Lowndes Hill Rd.
Greenville, SC 29607

1031 Chuck Dawley Blvd.
Building A Suite 2
Mt. Pleasant, SC 29494

1448 Brawley School Road
Mooresville, NC 28117

200 Centreport Drive
Suite 340
Greensboro, NC 27409

4008 Barrett Drive
Suite 106
Raleigh, NC 27609

FRED ECO

WALL-MOUNTED FUME EXTRACTOR

With 10' capture arm
800 CFM



The FRED Eco offers a simple, affordable, and easy-to-install fume extraction & filtration kit for everyday applications. The 10' flexible capture arm on the Fred Eco is externally articulated, making operator repositioning & maintenance easy.

The kit includes a 120V rotary motor starter that can be conveniently mounted close to the operator's working area. Once properly positioned, smoke, dust, and other airborne contaminants are safely captured before reaching the operator's respiratory zone. For applications where the extraction arm needs to be mounted further away from the blower, the remote mounting kit is a popular option.

The high-efficiency 26" filter collects submicron welding fumes before returning air to the facility. By capturing, cleaning, and recycling contaminated air, the FRED Eco works as a heat recovery device, helping you keep energy costs down.

Benefits:

- Easy-to-install, easy-to-operate
- Capture-at-source for cleaner air
- Complies with OSHA guidelines for controlling weld fumes

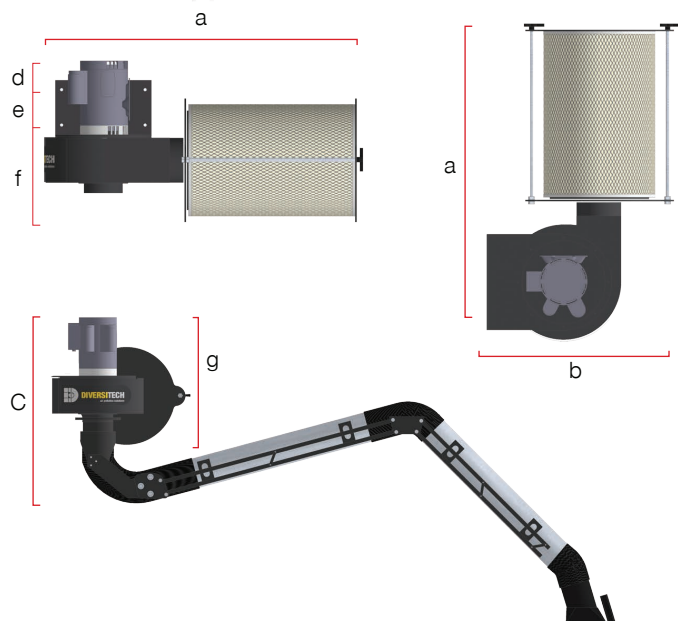
Features:

- Flexible 10' externally articulated capture arm
- 1.0HP TEFC, 800 CFM blower with a pre-installed bracket
- 26" re-useable cartridge filter (MERV 15)
- Rotary starter [120 VAC] with 15' Power Cord included

Options:

- Flexible externally articulated capture arm 6.5', 10', or 13'
- Automatic self-positioning, Fume Tracker™ capture arm
- 1.5 HP 1200 CFM High-Static Motor [120V 1PH]
- Extension boom, 5' or 10'
- Spunbond Polyester Filter Cartridge (washable)
- Hood mounted LED light kit

Primary Filters



NANOTECH XV

MERV 15 efficient cartridge filter captures particles at the submicron level, and surface-loading technology allows dust to be easily dislodged during cleaning with compressed air.



S-ECO2-26NF

EFFICIENCY:
FILTER MEDIA:
MEDIA AREA:
COATING:
END CAP:
CLEANING METHOD:
MAX TEMP:
FLANGE:

MERV 15
NANOFIBER
320 SQ.FT.
FIRE RETARDANT
OPEN/CLOSED
COMPRESSED AIR
180° F / 82° C
NONE

POLYTECH XI

MERV 11 efficient cartridge filter captures particles at the submicron level, it provides the highest level of filtration efficiency 99.97% at 0.3 micron.



S-ECO2-26PT

EFFICIENCY:
FILTER MEDIA:
MEDIA AREA:
COATING:
END CAP:
CLEANING METHOD:
MAX TEMP:
FLANGE:

MERV 11
SPUNBOND POLY
169 SQ.FT.
FIRE RETARDANT
OPEN/CLOSED
AIR + WATER WASH
180° F / 82° C
NONE

Dimensions

Model	Arm Length	Arm Diameter	Net Weight	Product Dimensions (in.)						
	(ft.)	(in.)	(lbs.)	Width [a]	Height [C]	Length [b]	[d]	[e]	[f]	[g]
FRED Eco single wall-mount arm										
FRED-ECO	10	6	160	25"+26 filter	35	27	4	5.5	11.5	21
	13	6	165	25"+26 filter	35	27	4	5.5	11.5	21

Technical Specifications

Model	Motor (H.P.)	Power					Airflow (CFM)	Cord	Arm
		Phase (hz)	@120V (amps)	@230V (amps)	@460V (amps)	@575V (amps)		Length (ft.)	Length (ft.)
FRED Eco single wall-mount arm									
FRED ECO	1.0	1P/60Hz	16	---	---	---	800	15	10/13
	1.5	1P/60Hz	13.2	---	---	---	1200	15	10/13
	3.0	3P/60Hz	---	7.1	3.7	3.2	1800	---	10/13

HEAD OFFICE

945 Lowndes Hill Rd.
Greenville, SC 29607

1031 Chuck Dawley Blvd.
Building A Suite 2
Mt. Pleasant, SC 29494

1448 Brawley School Road
Mooresville, NC 28117

200 Centreport Drive
Suite 340
Greensboro, NC 27409


4008 Barrett Drive
Suite 106
Raleigh, NC 27609

FRED SR C

SELF CLEANING, WALL MOUNTED EXTRACTOR



Fred SR1 C
With one 10' capture arm



Fred SR2 C
With two 10' capture arms



This professional grade fume extractor is the industry standard for eliminating smoke, dust and others unbreathable from the air. A 2500 CFM, 5HP blower ensures a high face-velocity across two independently movable capture arms, removing particulate as small as 0.5 micron with our standard MERV 15 rated Nanofiber filter

Our patented Injection Self-Cleaning System (ICS-360) reduces the FRED SR2 C's total cost of ownership by extending filter life expectancy, improving aggregate filter efficiency, and making routine service faster & easier.

Benefits:

- Automatic Filter Cleaning makes service easy
- Compact, portable and easy to operate
- Capture-at-source for cleaner air
- Complies with OSHA guidelines for controlling weld fumes

Features:

- Flexible 10' externally articulated capture arm
- ICS-360 Injection Self-Cleaning System
- 21" easy-to-service Nanofiber filter (MERV 15)

Options:

- Flexible externally articulated capture arm 6.5', 10', or 13'
- Automatic self-positioning, Fume Tracker™ capture arm
- 3.0 HP 1800 CFM High-Static Motor [230/460/575V 3PH]
- Odor Absorption Kits
- Minihelic Gauge
- Spunbond Polyester Filter Cartridge (washable)
- Afterfilter module, with HEPA Filter
- Hood mounted LED light kit



Primary Filters

NANOTECH XV

MERV 15 efficient cartridge filter captures particles at the submicron level, and surface-loading technology allows dust to be easily dislodged during cleaning with compressed air.



S-SR-21NF

EFFICIENCY: MERV 15
 FILTER MEDIA: NANOFIBER
 MEDIA AREA: 190 SQ.FT.
 COATING: FIRE RETARDANT
 END CAP: OPEN/CLOSED
 CLEANING METHOD: COMPRESSED AIR
 MAX TEMP: 180° F / 82° C
 FLANGE: NONE

POLYTECH XI

MERV 11 efficient cartridge filter captures particles at the submicron level, it provides the highest level of filtration efficiency 99.97% at 0.3 micron.



S-SR-21PT

EFFICIENCY: MERV 11
 FILTER MEDIA: SPUNBOND POLY
 MEDIA AREA: 105 SQ.FT.
 COATING: FIRE RETARDANT
 END CAP: OPEN/CLOSED
 CLEANING METHOD: AIR + WATER WASH
 MAX TEMP: 180° F / 82° C
 FLANGE: NONE

Secondary Filter

HEPA

High strength, high efficiency (MERV 17) cartridge filter made from 100% spun-bond polyester that lowers costs, by allowing for water-based cleaning of captured contaminants.



S-SR-1009

EFFICIENCY: MERV 17
 FILTER MEDIA: HEPA
 MEDIA AREA: 24" x 24" x 11 1/2"
 COATING: NONE
 END CAP: OPEN/CLOSED
 CLEANING METHOD: DISPOSABLE
 MAX TEMP: 175° F / 82° C
 FLANGE: NONE

IMPORTANT : If your equipment was purchased after November 15, 2018, a Replacement Filter Card, featuring filter details and simple instructions to easily order replacement filters, will be located on the filter door.

Dimensions **

Model	Arm Length (ft.)	Arm Diameter (in.)	Dimensions (in.)		
			Width	Height	Length
FRED SR2 C with two externally articulated manual capture arms					
FRED SR2 C	10 (x2)	6 (x2)	32.5	115	33
	13 (x2)	6 (x2)	32.5	128	33

** Product dimensions are based on base-models and may vary depending on selected product features. Please contact us for an accurate shipping quote.

Technical Specifications

Model	Motor (H.P.)	Power					Airflow (CFM)	Cord Length (ft.)	Arm Length (ft.)
		Phase (hz)	@120V (amps)	@230V (amps)	@460V (amps)	@575V (amps)			
FRED SR2 C with two externally articulated manual capture arms									
FRED SR2 C	5.0	3P/60Hz	---	13.0	6.5	5.2	2500	---	10/13

HEAD OFFICE

945 Lowndes Hill Rd.
 Greenville, SC 29607

1031 Chuck Dawley Blvd.
 Building A Suite 2
 Mt. Pleasant, SC 29494

1448 Brawley School Road
 Mooresville, NC 28117

200 Centreport Drive
 Suite 340
 Greensboro, NC 27409

4008 Barrett Drive
 Suite 106
 Raleigh, NC 27609

XA2 SERIES

ARTICULATED CAPTURE ARM



Diversitech's XA2 series fume extraction arms provide users with an ultra-smooth articulation and light-weight anodized aluminum construction for effortless re-positioning.

The Extractor capture arm features a pantograph external structure allowing the arm to be self-supporting even when fully extended and the pantograph mechanism offers easy and quick adjustment and maintenance. The heavy duty durable steel base pivots 360° and the square flanged hood with a built in handle offers a high face velocity, is externally adjustable and is available with an optional LED light kit.

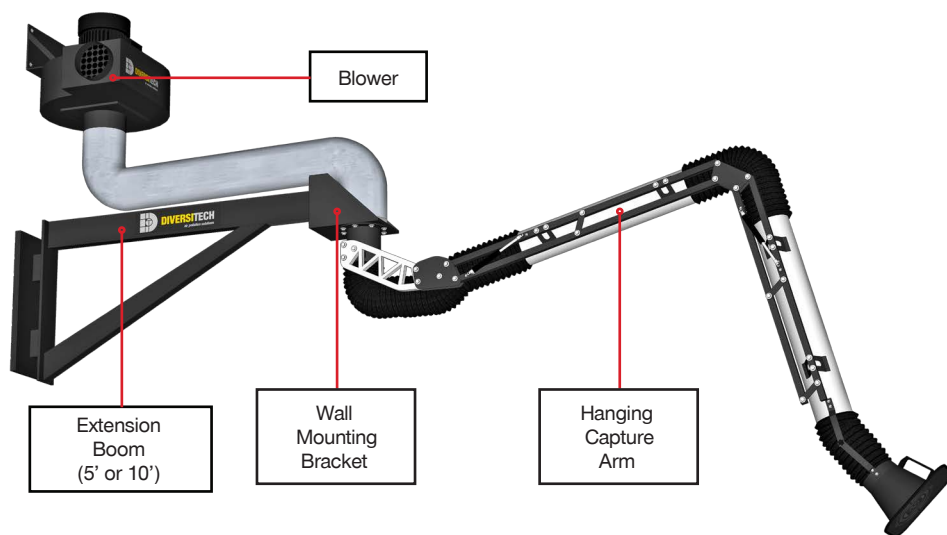
With Diversitech's line of fume exhaust arms, blowers & booms, you can create a capture-at-source solution for fumes & dust that adequately protects your workers. By capturing airborne contaminants as they are produced, these extraction arms & blowers help you stay OSHA compliant, and ensure that your working environment is clean and safe.

Features:

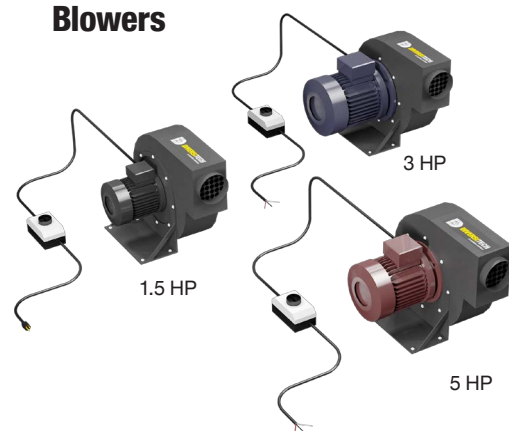
- Smooth, low-friction movement
- Flanged suction hood
- Wall mounted, column mounted or portable
- Externally articulated, gas spring loaded
- Industrial swivel-base

Options:

- Blowers (1500 to 2500 CFM)
- Hood mounted LED light kit
- Wall mounting bracket
- Extension booms (5' or 10')



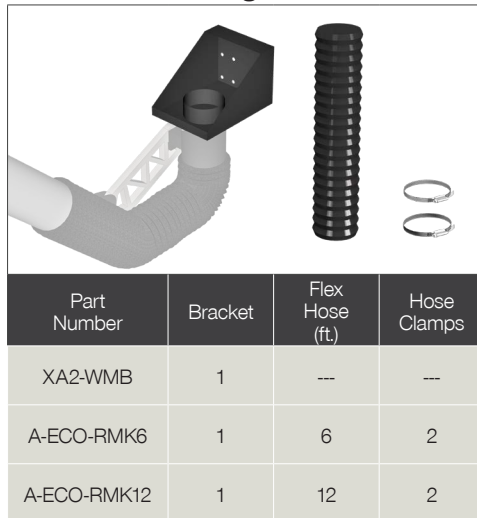
Blowers



Dimensions**

Model	Arm Length (ft.)	Arm Diameter (in.)	Net Weight (lbs.)	Product Dimensions (in.)		
				Width (in.)	Height (in.)	Length (in.)
XA2-6H06	6.5	6	35	13	14	78
XA2-6H10	10	6	45	13	14	120
XA2-6H13	13	6	70	13	14	158
BOOM-6-5	---	---	105	13	44	85
BOOM-6-10	---	---	135	13	44	140
BR-015	---	---	95	19	8	22
BR-030	---	---	110	19	8	22
BR-050	---	---	135	23	11	27

Remote Mounting Kits



** Product dimensions are based on base-models and may vary depending on selected product features. Please contact us for an accurate shipping quote.

Technical Specifications

Blower Model	Motor (H.P.)	Power					Airflow (CFM)	Cord Length (ft.)	Type
		Phase (hz)	@120V (amps)	@230V (amps)	@460V (amps)	@575V (amps)			
BR-015	1.5	1/60Hz	14.2	---	---	---	1200	6	TEFC
BR-030	3.0	3/60Hz	---	8.0	4.0	3.1	1800	6	TEFC
BR-050	5.0	3/60Hz	---	12.0	6.0	4.6	2500	6	TEFC

HEAD OFFICE

945 Lowndes Hill Rd.
Greenville, SC 29607

1031 Chuck Dawley Blvd.
Building A Suite 2
Mt. Pleasant, SC 29494

1448 Brawley School Road
Mooresville, NC 28117

200 Centreport Drive
Suite 340
Greensboro, NC 27409

4008 Barrett Drive
Suite 106
Raleigh, NC 27609

RA SERIES

RETRACTABLE CAPTURE ARM



Retractable\Telescopic Extraction Arm Diversitech's RA SERIES Telescopic Arm is designed to extract welding fumes and dust from confined work space environments. The arm is internally articulated with an extendable support structure, a flanged suction hood with a handle along with a rotating swivel base. The telescopic arm features an internal tubular structure allowing the arm to easily extend and retract. The self-supporting arm provides operators with a durable and flexible solution for many industrial applications.

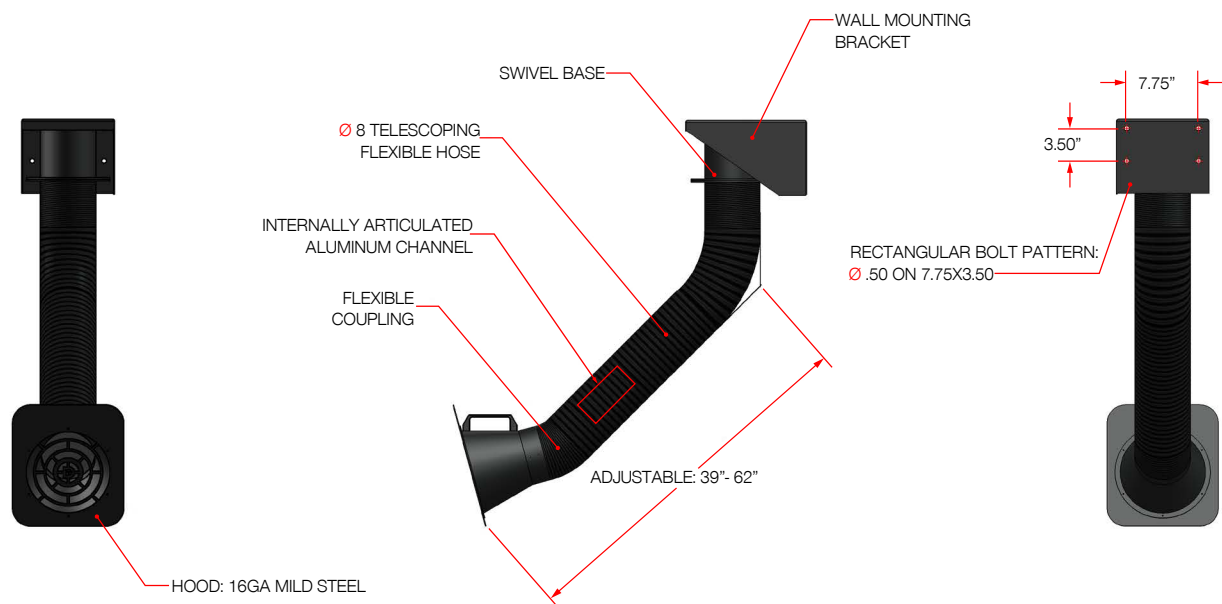
Typical limited space applications involve welding school booths, small workstations and other processes where a small retractable extraction arm provides the necessary flexibility. Telescopic arms can be paired with wall mounted fume extractors including the FRED Eco series, or bolted directly onto Diversitech's BR Blowers. The telescopic arms allow for capture at source extraction, helping you stay OSHA compliant and ensuring that your working environment is safe and secure for students and operators.

Features:

- Flexible 39 in. to 62 in. Internally Articulated Telescopic Arm with a Suction Hood
- Rugged steel construction
- Wall or post mountable

Benefits:

- Capture-at-source for Cleaner Air
- Complies with OSHA guidelines for controlling weld fumes
- Retractable Compact Footprint



Dimensions **

Model	Arm Length	Arm Diameter	Net Weight	Product Dimensions (in.)		
	(ft.)	(in.)	(lbs.)	Width	Height	Length
RA Series Retractable\Telescopic Extraction Arm						
RA-6H063	3.5 to 5.2	8	50	12	13.5	56

** Product dimensions are based on base-models and may vary depending on selected product features. Please contact us for an accurate shipping quote.

Vocational & Educational Solutions



HEAD OFFICE

945 Lowndes Hill Rd.
Greenville, SC 29607

1031 Chuck Dawley Blvd.
Building A Suite 2
Mt. Pleasant, SC 29494

1448 Brawley School Road
Mooresville, NC 28117

200 Centreport Drive
Suite 340
Greensboro, NC 27409

4008 Barrett Drive
Suite 106
Raleigh, NC 27609

GREEN FILTER CLEANING MACHINE



Benefits:

- Reuse filters 3-6 times
- Automated cleaning cycle
- Reduces waste & environmentally friendly
- Pays for itself with savings

Features:

- Stand alone unit designed to clean cylindrical cartridge filters
- Dry patented cleaning process
- ICS-360 Injection self-cleaning mechanism
- Lexan transparent cyclone dust collector
- Filter inspection station (optional)

How it Works

The Green Filter Cleaning Machine effectively and safely cleans your cartridge style air filters. The recycling of dirty cartridge filters translates into immediate ROI as filters can be cleaned and reused up to 3-6 times, depending on application. The Filter Cleaning Machine is designed to reduce filter pressure drop after cleaning, improving the performance and efficiency of your air filtration system.

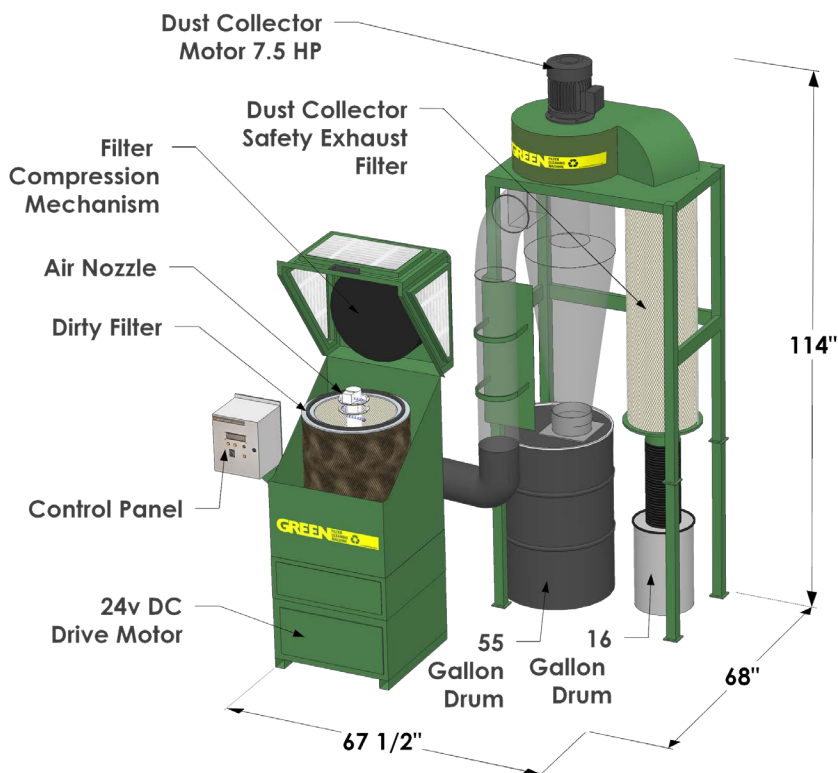
The machine is ideal for cleaning dust collector cartridge filters, diesel engine intake filters, or any cartridge filter with an inner diameter greater than 6.5" and shorter than 40" in height. The filter cleaning mechanism requires 80 cfm of dry compressed air at 80-100 psi to function properly. Diversitech's Green Filter Cleaning Machine provides users with reduced landfill waste, protects workers by automating the hazardous filter cleaning process and saves companies on replacement filter and disposal costs.

Ideal Applications:

- Dust collector cartridges
- Mining & construction machinery intake air filters
- Gas turbine intake filters
- Vacuum pump intake filters
- Cylindrical cartridge filters/miscellaneous industries



METAL DUST • FOOD DUST • PLASTIC DUST • PAPER DUST • POWDER



Filter Inspection Station



**Diesel
Inspection
Station**



**Inspection
Station**

The Diversitech Filter Inspection Station allows for the measurement of the filter condition before and after cleaning. To provide the best "real world" evaluation of the filter, a high power blower is used to draw air through the filter while the pressure drop across the filter is measured.

Once the filter has been cleaned, the measurement can be repeated to determine if further cleaning is required. A visual inspection of the filter media is performed using a high-power hand-held light. This allows for detection of tears or weak areas in the media. Once the filter has been inspected it can be bagged and stored until required. (Optional)

Dimensions

Model	*Footprint (in.)			Net Weight (lbs.)	Filter Dimensions (in.)		
	Length [b]	Height [C]	Width [d]		Minimum Inner Diameter	Maximum Outer Diameter	Maximum Height
GFCM 32	34	86	32	654+359	6.5	20	32
GFCM 40	34	86	32	654+359	6.5	20	40

*Footprint varies depending upon installation configuration

Technical Specifications

Model	Nominal Airflow (CFM)	Drum Capacity (Gallons)	Motor (H.P)	Power				Compressed Air Requirements	Noise @5ft. (dB)
				Phase (hz)	@230V (amps)	@460V (amps)	@575V (amps)		
GFCM 32	2000	55	7.5	3P / 60Hz	22	11	9	80 CFM @ 100 psi	84.5
GFCM 40	2000	55	7.5	3P / 60Hz	22	11	9	80 CFM @ 100 psi	84.5

HEAD OFFICE

945 Lowndes Hill Rd.
Greenville, SC 29607

1031 Chuck Dawley Blvd.
Building A Suite 2
Mt. Pleasant, SC 29494

1448 Brawley School Road
Mooresville, NC 28117

200 Centreport Drive
Suite 340
Greensboro, NC 27409

4008 Barrett Drive
Suite 106
Raleigh, NC 27609

MINI DD

PORTABLE DOWNDRAFT TABLE



Welding



Grinding



Deburring

The Mini DD is a portable, economical, and easy-to-use downdraft table for light-medium duty applications. Now any fumes, smoke, or dust from your shop activities can be captured right as they are produced, before compromising your indoor air quality.

The table comes fitted with multi-stage spark arrestance baffles, industrial swivel casters, and standard 120V single-phase (60Hz) input power for plug & play convenience. The paper pleated panel filter is easily accessed by four screw knobs located on the right side of the machine.

Many options and accessories are available for the Mini DD downdraft table. This table can be built-to-order in almost any configuration. Alternatively, pre-assembled packages offer great value, one of the more popular kit is the welding, grinding, deburring package, which adds side and back walls, second-stage metal mesh prefilter, and a grounding lug.

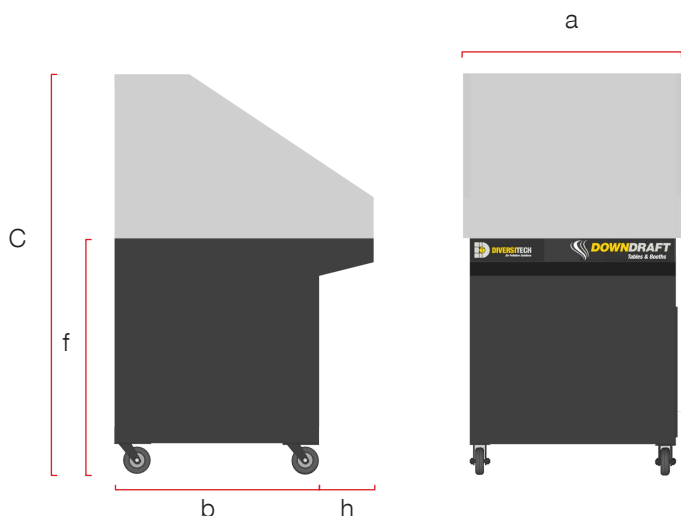
Benefits:

- Simple to use, plug & play design
- Ultra-small footprint & no permanent ducting
- Complies with OSHA guidelines for safe capture of dust, smoke, and weld fumes

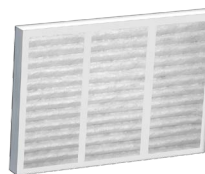
Features:

- Flexible 38" x 30" worksurface
- High capture face velocity (250fpm)
- 1.0HP Belt Drive Blower producing 1200 CFM of airflow
- Multi-stage spark arrestance baffling
- Industrial swivel-casters

Primary Filter



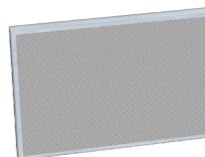
PAPER PLEAT



S-MINI-0003

EFFICIENCY: MERV 8
 FILTER MEDIA: 30% PAPER-PLEATED
 MEDIA AREA: 20" X 25" X 2"
 CLEANING METHOD: DISPOSABLE
 MAX TEMP: 180° F / 82° C
 FLANGE: NONE

METAL MESH PRE-FILTER

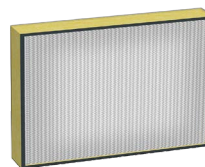


A-MINI-MM

EFFICIENCY: NONE
 FILTER MEDIA: METAL MESH PANEL
 MEDIA AREA: 20" X 25" X 2"
 CLEANING METHOD: WATER WASH
 MAX TEMP: 180° F / 82° C
 FLANGE: NONE

After Filters

HEPA



S-MINI-0017

EFFICIENCY: MERV 17
 FILTER MEDIA: HEPA
 MEDIA AREA: 20" X 25" X 4"
 CLEANING METHOD: DISPOSABLE
 MAX TEMP: 180° F / 82° C
 FLANGE: NONE

Safety note : units are not designed to collect possible explosive dusts such as aluminum, magnesium, wood chips or similar.

DO NOT COLLECT EXPLOSIVE DUSTS IN THIS UNIT.

Dimensions **

Model	Footprint (in.)			Worksurface (in.)		Table	Overhang	Net
	Width [a]	Height [C]	Length [b]	Width	Length	Height [f]	[h]	Weight (lbs.)
Downdraft Tables, Standard Size								
MINI-DD	31	34.5	39	30	38	34.5	8	219
Downdraft Tables, extended overhang								
MINI-DD-EO	31	34.5	45	30	42	34.5	12	219

** Product dimensions are based on base-models and may vary depending on selected product features. Please contact us for an accurate shipping quote.

Technical Specifications

Model	Motor (H.P.)	Power					Avg Airflow Pressure (CFM)	Static Pressure (in.)	Avg Face Velocity (FPM)	Cord Length (in.)	Noise @5ft. (dB)
		Phase (hz)	@120V (amps)	@230V (amps)	@460V (amps)	@575V (amps)					
Portable Downdraft Tables, Single Phase											
MINI-DD	1.0	1P/60Hz	12.0	---	---	---	1200	2.5	250	15	72

HEAD OFFICE

945 Lowndes Hill Rd.
 Greenville, SC 29607

1031 Chuck Dawley Blvd.
 Building A Suite 2
 Mt. Pleasant, SC 29494

1448 Brawley School Road
 Mooresville, NC 28117

200 Centreport Drive
 Suite 340
 Greensboro, NC 27409

4008 Barrett Drive
 Suite 106
 Raleigh, NC 27609

DD 2X4

PORTABLE DOWNDRAFT TABLE



The DD 2X4 is a portable, reliable, and easy-to-use downdraft table for industrial duty applications. Now any fumes, smoke, or dust from your shop activities can be captured right as they are produced, before compromising your indoor air quality.

The table comes fitted with multi-stage spark arrestance baffles, industrial swivel casters, and a push-button reverse-pulse filter cleaning system to help reduce maintenance requirements. Choose from a 1.5HP 1500CFM single phase [120V] motor, or 3.0HP 2600CFM three phase [230/460/575V] for higher capture face velocity. Single phase models include a 15' power cord for plug & play convenience. Many options and accessories are available for the DD 2X4 downdraft table. This table can be built-to-order in almost any configuration.

Flexible, all-in-one, downdraft solution for dust, smoke, or fumes produced from welding, grinding, deburring, cutting, sanding, finishing, soldering, painting, or mixing.

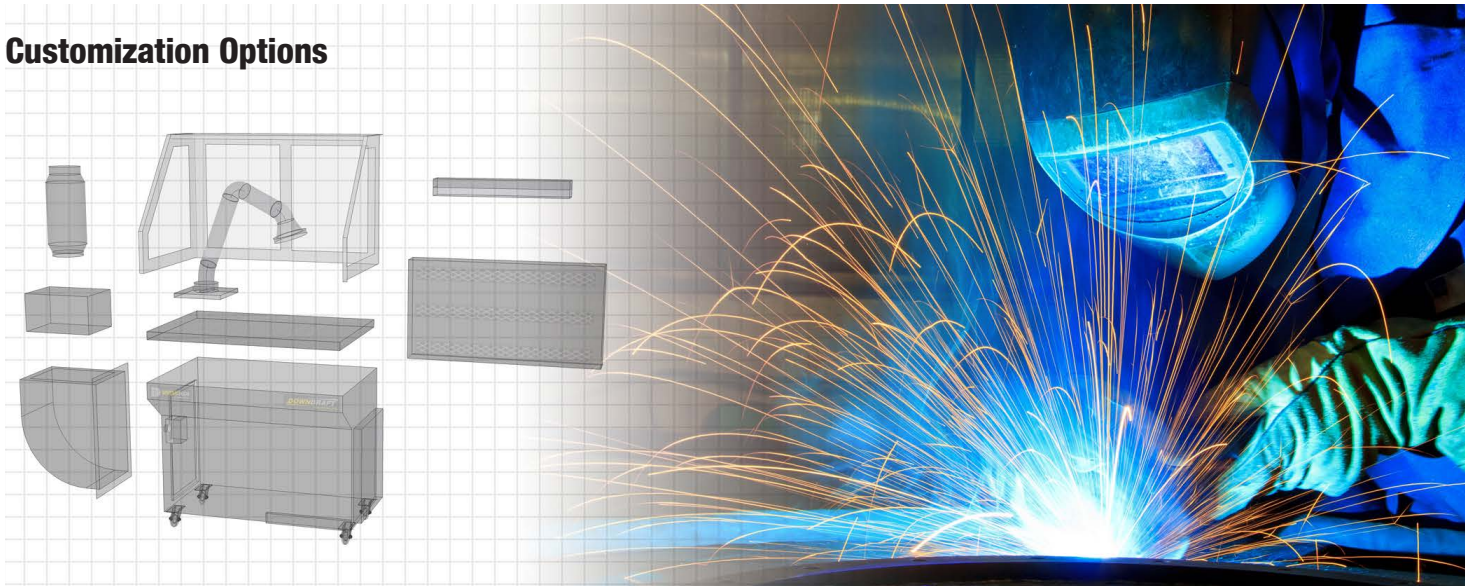
Features:

- Flexible 32" x 48" worksurface
- High capture face velocity (250fpm)
- Multi-stage spark arrestance baffling
- Industrial swivel-casters
- On-demand, reverse pulse cleaning system

Benefits:

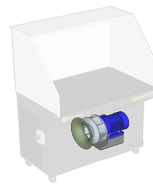
- Simple to use, plug & play design
- Ultra-small footprint & no permanent ducting
- Complies with OSHA guidelines for safe capture of dust, smoke, and weld fumes

Customization Options



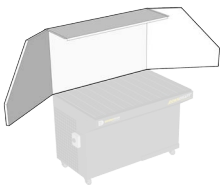
Lexan Side & Back Walls

Contain dust and fumes high over your table surface, enables users to trap particulate using 30" high see-through lexan side and back panels.



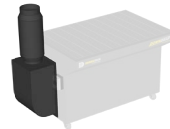
3HP Motor

The 3 Phase 3HP motor doubles the suction to 2600 CFM, allowing you to properly ventilate a backdraft hood or overcome the pressure from a HEPA or carbon filter.



Hinged Side & Back Walls

Provide extra space for your work pieces, allow longer parts room to overhang your downdraft table by hinging out the side walls.



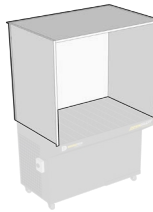
Side Stack Silencer

Reduce the sound level of your air filtration unit. Silences noise in a duct muffler and projects it above the operator's hearing zone.



Backdraft Hood

Capture dust and fumes high above your table surface, enables users to draw particulate back away from the operator when operating 12" or more above the downdraft work surface.



48" Booth Walls

Fully enclose your work area with 48" high side and back walls with a top plate. The clean air workstation booth also comes with a backdraft hood and dust-proof light kit.



Dust-proof Light Kit

Illuminate your workspace and brighten your operations, the dust-proof light kit provides lighting without the risk of damaging the bulbs.



Miniheric Gauge

Miniheric gauge measures pressure drop over the filters to indicate when the filters must be cleaned or replaced.

Primary Filters

NANOTECH XV

MERV 15 efficient cartridge filter captures particles at the submicron level, and surface-loading technology allows dust to be easily dislodged during cleaning with compressed air.



S-2X4-20NF

EFFICIENCY:
FILTER MEDIA:
MEDIA AREA:
COATING:
END CAP:
CLEANING METHOD:
MAX TEMP:
FLANGE:

MERV 15
NANOFIBER
149 SQ.FT.
FIRE RETARDANT
OPEN/CLOSED
COMPRESSED AIR
180° F / 82° C
NONE

After Filters

HEPA

MERV 17 efficient cartridge filter captures particles at the submicron level, it provides the highest level of filtration efficiency 99.97% at 0.3 micron.



S-HEP-242412

EFFICIENCY:
FILTER MEDIA:
MEDIA AREA:
COATING:
END CAP:
CLEANING METHOD:
MAX TEMP:
FLANGE:

MERV 17
HEPA
24" x 24" x 11 1/2"
NONE
N/A
DISPOSABLE
175° F / 82° C
NONE

POLYTECH XI

High strength, high efficiency (MERV 11) cartridge filter made from 100% spun-bond polyester that lowers costs, by allowing for water-based cleaning of captured contaminants.



S-2X4-0002

EFFICIENCY:
FILTER MEDIA:
MEDIA AREA:
COATING:
END CAP:
CLEANING METHOD:
MAX TEMP:
FLANGE:

MERV 11
SPUNBOND POLY
100 SQ.FT.
WATER-REPELLENT
OPEN/CLOSED
AIR + WATER WASH
180° F / 82° C
NONE

CARBOTECH 50

Reusable steel canister filled with 50lbs of activated carbon to filter VOC fumes and odors. Double the filter life by flipping the canister top-to-bottom, allowing for adequate contaminant distribution through the media.



S-CCX-50R

WEIGHT:
FILTER MEDIA:
MEDIA THICKNESS:
COVER:
END CAP:
CLEANING METHOD:
MAX TEMP:
FLANGE:

50LBS
CARBON
2.6"
3/4" ANTIBACTERIAL
TWIST LOCK REMOVABLE
NONE
175° F / 80° C
NONE

IMPORTANT : If your equipment was purchased after November 15, 2018, a Replacement Filter Card, featuring filter details and simple instructions to easily order replacement filters, will be located on the filter door.

Specifications

Product No.	Airflow (CFM)	Face Velocity (FPM)	Motor (H.P.)	Pre Filter Type	Primary Filter Type	After Filter Type	Input Power (v/p/hz)	F.L.A (amps)	Noise @5ft. (dB)	Power Cord (ft.)	Weight	
											Gross (lbs.)	Net (lbs.)
WELDING, GRINDING, DEBURRING KIT												
DD-2X4-015N1-WGD	1500	340	1.5	Metal-Mesh	Nano-Fiber	—	120v/1/60Hz	14.2	75dB@ 5 ft.	15	495	310
DD-2X4-030N2-WGD	2600	450	3.0	Metal-Mesh	Nano-Fiber	—	230v/3/60Hz	9.6	77dB@ 5 ft.	—	535	340
DD-2X4-030N4-WGD	2600	450	3.0	Metal-Mesh	Nano-Fiber	—	460v/3/60Hz	4.8	77dB@ 5 ft.	—	535	340
DD-2X4-030N5-WGD	2600	450	3.0	Metal-Mesh	Nano-Fiber	—	575v/3/60Hz	3.9	77dB@ 5 ft.	—	535	340
CLEAN AIR WORK STATION												
DD-2X4-030N2-CAW	2600	450	3.0	Metal-Mesh	Nano-Fiber	—	230v/3/60Hz	9.6	77dB@ 5 ft.	—	595	400
DD-2X4-030N4-CAW	2600	450	3.0	Metal-Mesh	Nano-Fiber	—	460v/3/60Hz	4.8	77dB@ 5 ft.	—	595	400
DD-2X4-030N5-CAW	2600	450	3.0	Metal-Mesh	Nano-Fiber	—	575v/3/60Hz	3.9	77dB@ 5 ft.	—	595	400
VOC & PAINT KIT												
DD-2X4-030S2-SPR	2600	450	3.0	Paint arrestor	Poly	Activated Carbon	230v/3/60Hz	9.6	77dB@ 5 ft.	—	545	350
DD-2X4-030S4-SPR	2600	450	3.0	Paint arrestor	Poly	Activated Carbon	460v/3/60Hz	4.8	77dB@ 5 ft.	—	545	350
DD-2X4-030S5-SPR	2600	450	3.0	Paint arrestor	Poly	Activated Carbon	575v/3/60Hz	3.9	77dB@ 5 ft.	—	545	350
PLASMA CUTTING KIT												
DD-2X4-030N2-PLA	2600	450	3.0	Gravel Bed	Nano-Fiber	—	230v/3/60Hz	9.6	77dB@ 5 ft.	—	545	350
DD-2X4-030N4-PLA	2600	450	3.0	Gravel Bed	Nano-Fiber	—	460v/3/60Hz	4.8	77dB@ 5 ft.	—	545	350
DD-2X4-030N5-PLA	2600	450	3.0	Gravel Bed	Nano-Fiber	—	575v/3/60Hz	3.9	77dB@ 5 ft.	—	545	350

Welding, Grinding & Deburring Kit:

- Side and back walls
- Metal mesh pre-filter
- Grounding lug



Plasma Cutting Kit:

- 2" high steel bar grating
- Slag collection baffle with 3/4" gravel
- Metal mesh pre-filter



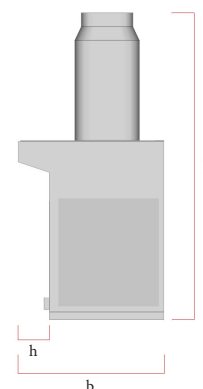
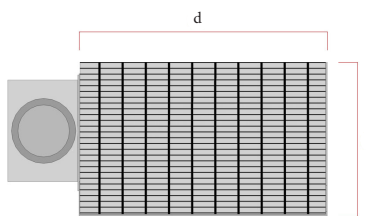
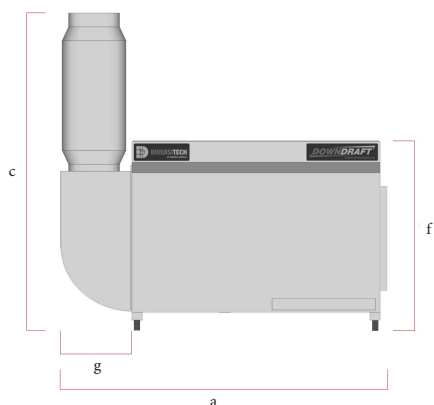
VOC & Paint Kit:

- Side and back walls
- Paint arrestor pre-filter
- Reversible carbon canister afterfilter



Clean Air Workstation:

- Side and back walls (48" high w/top cover)
- Dust & vapor proof light kit
- Backdraft hood



Dimensions **

Model	Exhaust Diameter (in.)	Footprint (in.)			Worksurface (in.)		Table Height [f]	Net Weight (lbs.)	Exhaust [g]	Overhang [h]
		Width [a]	Height [C]	Length [b]	Width [d]	Length [e]				
Downdraft Tables, Standard Size										
DD-2X4 1.5 HP	---	49.5	39	32.5	48	32	39.5	300	10.5	8
DD-2X4 3 HP	8" x 1	60	69.5	32.5	48	32	39.5	300	10.5	8
Downdraft Tables, extended overhang										
DD-2X4-EO 1.5 HP	---	49.5	39	38.5	48	38	39.5	310	10.5	12
DD-2X4-EO 3 HP	8" x 1	60	69.5	38.5	48	38	39.5	310	10.5	12

** Product dimensions are based on base-models and may vary depending on selected product features. Please contact us for an accurate shipping quote.

HEAD OFFICE

945 Lowndes Hill Rd.
Greenville, SC 29607

1031 Chuck Dawley Blvd.
Building A Suite 2
Mt. Pleasant, SC 29494

1448 Brawley School Road
Mooresville, NC 28117

200 Centreport Drive
Suite 340
Greensboro, NC 27409

4008 Barrett Drive
Suite 106
Raleigh, NC 27609

INDUSTRIAL DOWNDRAFT TABLES

3X4, 3X6, 3X8, 4X4, 4X6, 4X8, 5X10



Diversitech's DD series of industrial downdraft tables are the trusted choice of North America's largest manufacturers, and are built to withstand the most demanding applications. Any fumes, smoke or dust from your production activities can be captured right as they are produced, before compromising your indoor air quality. Your choice of standard table sizes range from 3'x4' to 5'x10', and larger worksurfaces can be easily created by "mirroring" multiple tables.

All downdraft tables come fitted with multi-stage spark arrestance baffles, dual 10" diameter exhaust silencers and an automatic reverse-pulse filter cleaning system to help reduce maintenance requirements. Many options and accessories are available for the DD series of downdraft tables, and tables can be custom configured and built-to-order in almost any configuration.

Flexible, all-in-one, downdraft solution for dust, smoke, or fumes produced from welding, grinding, deburring, cutting, sanding, finishing, soldering, painting, or mixing.

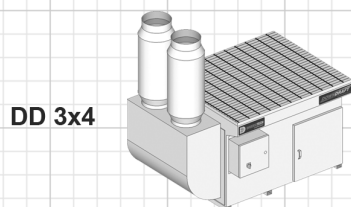
Features:

- High capture face velocity (250fpm)
- Multi-stage spark arrestance baffling
- Industrial swivel-casters
- Reverse pulse cleaning system

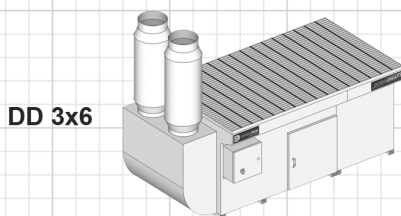
Benefits:

- Hands-free capture-at-source
- Low maintenance, automatic self-cleaning system included
- Complies with OSHA guidelines for safe capture of dust, smoke, and weld fumes

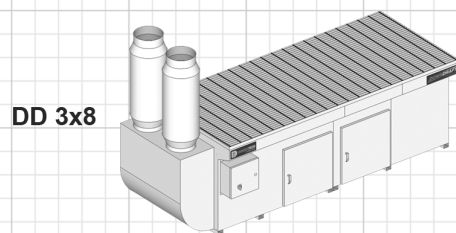
The Industrial Downdraft Family



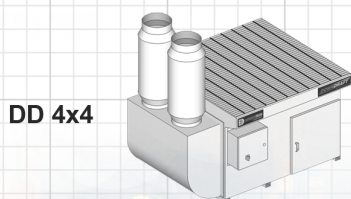
DD 3x4



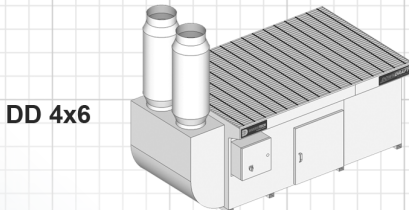
DD 3x6



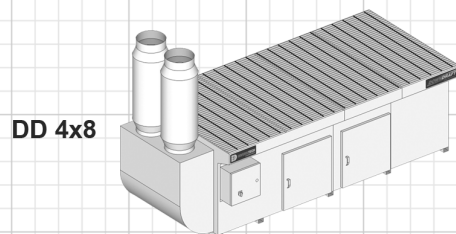
DD 3x8



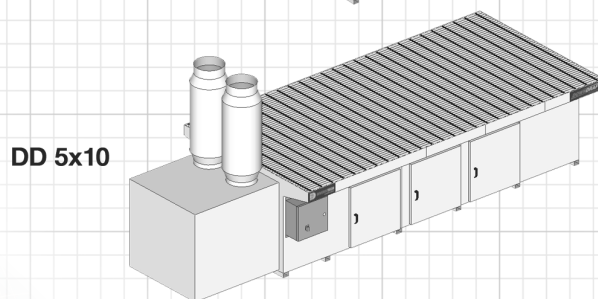
DD 4x4



DD 4x6



DD 4x8



DD 5x10

Welding, Grinding & Deburring Kit:

- Side and back walls
- Metal mesh pre-filter
- Grounding lug



Plasma Cutting Kit:

- 2" high steel bar grating
- Slag collection baffle with 3/4" gravel
- Metal mesh pre-filter



VOC & Paint Kit:

- Side and back walls
- Paint arrestor pre-filter
- Reversible carbon canister afterfilter



Clean Air Workstation:

- Side and back walls (48" high w/top cover)
- Dust & vapor proof light kit
- Backdraft hood



Primary Filters

NANOTECH XV

MERV 15 efficient cartridge filter captures particles at the submicron level, and surface-loading technology allows dust to be easily dislodged during cleaning with compressed air.



EFFICIENCY:
FILTER MEDIA:
MEDIA AREA:
COATING:
END CAP:
CLEANING METHOD:
MAX TEMP:
FLANGE:

MERV 15
NANOFIBER
140 SQ.FT.
FIRE RETARDANT
OPEN/CLOSED
COMPRESSED AIR
180° F / 82° C
YES

POLYTECH XI

High strength, high efficiency (MERV 11) cartridge filter made from 100% spun-bond polyester that lowers costs, by allowing for water-based cleaning of captured contaminants.



EFFICIENCY:
FILTER MEDIA:
MEDIA AREA:
COATING:
END CAP:
CLEANING METHOD:
MAX TEMP:
FLANGE:

MERV 11
SPUNBOND POLY
55 SQ.FT.
WATER REPELLENT
OPEN/CLOSED
AIR + WATER WASH
180° F / 82° C
YES

After Filters

HEPA

MERV 17 efficient cartridge filter captures particles at the submicron level, it provides the highest level of filtration efficiency 99.97% at 0.3 micron.



EFFICIENCY:
FILTER MEDIA:
MEDIA AREA:
COATING:
END CAP:
CLEANING METHOD:
MAX TEMP:
FLANGE:

MERV 17
HEPA
24" x 24" x 11½"
NONE
N/A
DISPOSABLE
175° F / 82° C
NONE

CARBOTECH 50

Reusable steel canister filled with 50lbs of activated carbon to filter VOC fumes and odors. Double the filter life by flipping the canister top-to-bottom, allowing for adequate contaminant distribution through the media.



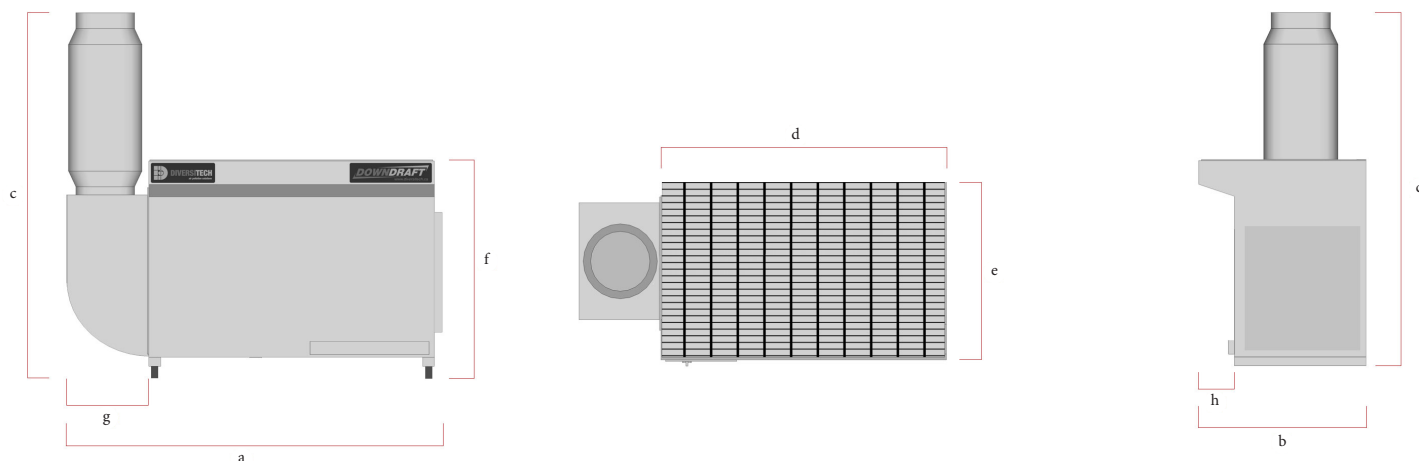
WEIGHT:
FILTER MEDIA:
MEDIA THICKNESS:
COVER:
END CAP:
CLEANING METHOD:
MAX TEMP:
FLANGE:

50LBS
CARBON
2.6"
3/4" ANTIBACTERIAL
TWIST LOCK REMOVABLE
NONE
175° F / 80° C
NONE

IMPORTANT : If your equipment was purchased after November 15, 2018, a Replacement Filter Card, featuring filter details and simple instructions to easily order replacement filters, will be located on the filter door.

Specifications

Model	Motor	Power				Nominal	Static	Face	Noise
		Phase	@230V F.L.A (amps)	@460V F.L.A (amps)	@575V F.L.A (amps)				
	(H.P)	(hz)				(CFM)	(in.)	(FPM)	(dB)
Industrial Downdraft Tables, three phase									
DD-3X4	5.0	3P/60Hz	15.2	7.6	6.1	4300	4.0	450	79
DD-3X6	5.0	3P/60Hz	15.2	7.6	6.1	4300	4.0	325	79
	7.5	3P/60Hz	22.0	11.0	9.0	4800	4.0	375	81
DD-3X8	7.5	3P/60Hz	22.0	11.0	9.0	4800	4.0	330	81
	10.0	3P/60Hz	28.0	14.0	11.0	5050	4.0	338	83
Industrial Multi-operator Downdraft Tables, three phase									
DD-4X4	5.0	3P/60Hz	15.2	7.6	6.1	4300	4.0	425	79
DD-4X6	7.5	3P/60Hz	22.0	11.0	9.0	4800	4.0	325	81
	10.0	3P/60Hz	28.0	14.0	11.0	5050	4.0	375	83
DD-4X8	10.0	3P/60Hz	28.0	14.0	11.0	5050	4.0	300	83
DD-5X10	15.0	3P/60Hz	42.0	21.0	17.0	8600	4.0	330	85



Dimensions **

Model	Exhaust Diameter (in.)	Footprint (in.)			Worksurface (in.)		Table Height [f/S&B/CAW]	Net Weight (lbs.)	Exhaust [g]	Overhang [h] (in.)
		Length [b]	Width [a]	Height [C]	Length [e]	Width [d]				
	Downdraft Tables, Standard Size									
DD-3X4	10 x 2	43	62	68.5	42	48	36/69/84	258	14	6
DD-3X6	10 x 2	43	87	68.5	42	72	36/69/84	329	14	6
DD-3X8	10 x 2	43	111	68.5	42	96	36/69/84	421	14	6
DD-4X4	10 x 2	49	63	68.5	48	48	36/69/84	621	14	6 x 2
DD-4X6	10 x 2	49	87	68.5	48	72	36/69/84	729	14	6 x 2
DD-4X8	10 x 2	49	111	68.5	48	96	36/69/84	875	14	6 x 2
DD-5X10	10 x 2	61	155	68.5	60	120	36/69/84	1107	34	12 x 2
Downdraft Tables, extended overhang										
DD-3X4-EO	10 x 2	49	63	68.5	48	48	36/69/84	258	14	12
DD-3X6-EO	10 x 2	49	87	68.5	48	72	36/69/84	329	14	12
DD-3X8-EO	10 x 2	49	111	68.5	48	96	36/69/84	421	14	12
DD-4X4-EO	10 x 2	61	63	68.5	60	48	36/69/84	621	14	12 x 2
DD-4X6-EO	10 x 2	61	87	68.5	60	72	36/69/84	729	14	12 x 2

** Product dimensions are based on base-models and may vary depending on selected product features. Please contact us for an accurate shipping quote.

HEAD OFFICE

945 Lowndes Hill Rd.
Greenville, SC 29607

1031 Chuck Dawley Blvd.
Building A Suite 2
Mt. Pleasant, SC 29494

1448 Brawley School Road
Mooresville, NC 28117

200 Centreport Drive
Suite 340
Greensboro, NC 27409

4008 Barrett Drive
Suite 106
Raleigh, NC 27609

MONSOON

WET DOWNDRAFT TABLE



The MONSOON™ Wet Downdraft Table product series delivers the safe capture of hazardous/combustible dusts with the smallest equipment footprint in the industry. This self-contained wet downdraft table's patent-pending design achieves a very high face-velocity at a very affordable price. A wide range of application kits and custom fittings can help you meet your NFPA and OSHA requirements.

The MONSOON™ series all include industrial swivel casters, adding mobility and versatility to your application. This wet filtration table is perfect for capturing combustible dust, including mixtures of steel, aluminum, titanium, and magnesium.

The MONSOON™ works by drawing dust-laden air through the table surface and into a cascading water bath. The wet downdraft table cleans the air by using the combined action of centrifugal force and a thorough intermixing of water and dust laden air. The dust is separated from the airstream by water droplets created by the flow of air through strategically placed baffle plates. Once wet, the dust becomes permanently trapped and falls down into a reservoir.

Benefits:

- Capture-at-source for Cleaner Air
- Complies with NFPA guidelines for Combustible Dust

Features:

- Auto-fill Water Control System (3X4, 3X6, 3X8)
- Anti-corrosion Stainless Steel Construction
- Motor Starter and a Non-Sparking Blower Wheel
- Low-cost mist eliminator afterfilters

Options:

- Auto Wash-down System
- WV-55 Sludge-Vac
- Side and Back Walls
- Hepa after-filter kit (99.99% @ 0.3 micron)
- Dust-Tight/Vapor-Tight Light Kit
- Auto-fill Water Control System (MDD-MINI)

**Custom configurations available on request.*

Models



MDD-MINI



MDD-3X4

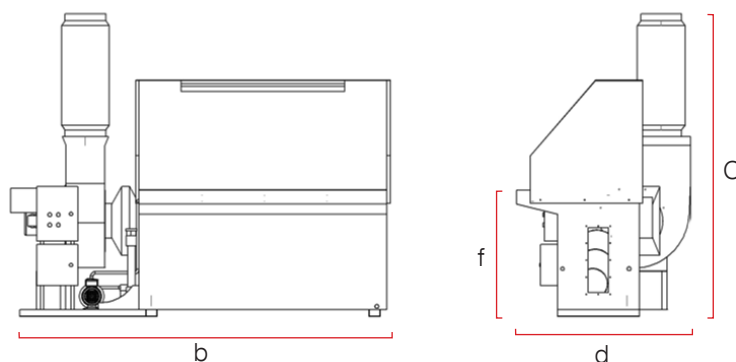


MDD-3X6



MDD-3X8

MDD-MINI and MDD-3X4 shown with optional side and back walls.



Dimensions **

Model	Footprint (in.)			Net Weight (lbs.)	Worksurface (in.)			Water	
	Width [b]	Height [C]	Length [d]		Width	Height [f]	Length	Supply (in.)	Drain (in.)
MDD-MINI	68	74	45	542	30	37	36	1/2 NPT	1 1/2" NPT
MDD-3X4	90	89	45	621	49	37	36	1/2 NPT	1 1/2" NPT
MDD-3X6	115	89	45	646	73	37	36	1/2 NPT	1 1/2" NPT
MDD-3X8	142	89	56	810	97	37	36	1/2 NPT	1 1/2" NPT

1. Water Level is marked on each unit.

** Product dimensions are based on base-models and may vary depending on selected product features. Please contact us for an accurate shipping quote.

Technical Specifications

Model	Water Fill System	Nominal Airflow (CFM)	Tank Capacity (Gallons)	Motor (H.P.)	Power				Noise @5ft. (dB)
					Phase (hz)	@230V (amps)	@460V (amps)	@575V (amps)	
MDD-MINI	manual	1200	23	3.0	3P / 60Hz	9.6	4.8	3.9	75
MDD-3X4	auto	3000	40	5.0	3P / 60Hz	15.2	7.6	6.1	72
MDD-3X6	auto	5000	60	10.0	3P / 60Hz	28.0	14.0	11.0	78
MDD-3X8	auto	6500	60	15.0	3P / 60Hz	34.0	16.9	14.0	80

HEAD OFFICE

945 Lowndes Hill Rd.
Greenville, SC 29607

1031 Chuck Dawley Blvd.
Building A Suite 2
Mt. Pleasant, SC 29494

1448 Brawley School Road
Mooresville, NC 28117

200 Centreport Drive
Suite 340
Greensboro, NC 27409

4008 Barrett Drive
Suite 106
Raleigh, NC 27609

TYPHOON WX SERIES

WET DUST COLLECTORS



Sanding



Grinding



Deburring

The stainless steel wet dust collector excels at capturing combustible/hazardous dust from your plant air. The blower draws air through DiversiTech's proprietary water-tree baffle design, creating a cascading water effect that removes particles as small as 3 micron from the airstream. Dust is filtered through contact with water droplets and contained in the bottom of the collector for safe removal at necessary maintenance intervals. Water levels are automatically controlled with valves and sensors, including interlock functions to meet NFPA and OSHA codes.

NFPA 484 Compliant

In 2015, NFPA updated the 484 standard requiring an interlocked offline vent fan, to prevent build-up of hydrogen gas. Optional HEPA filters also now require a high temperature alert. Diversitech's CSA/UL certified control panel now supports:

- Offline Vent Fan included
- HEPA Filter high temperature alert (option)

100% Duty Cycle

The Typhoon WX collector's new ultrasonic water sensor monitors and automatically adds water as needed, even while the machine is in operation.

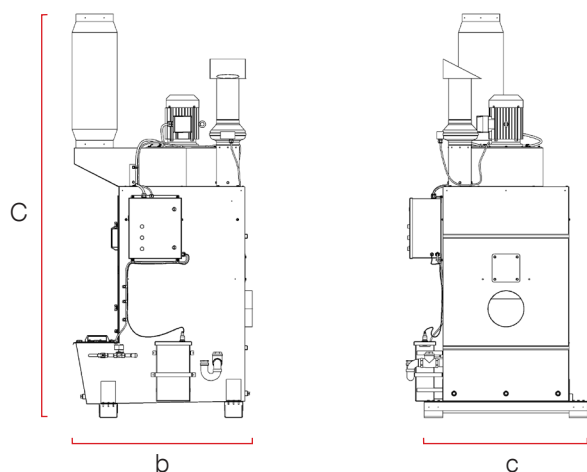
- Online adaptive water-level control
- Automatically adds water, offline & online
- Safety overflow drain

Benefits:

- Capture-at-source for Cleaner Air
- Complies with NFPA guidelines for Combustible Dust

Features:

- Ultrasonic water level sensor
- NEMA 12 control panel w/LCD display
- Mainline Interlock Switch
- Anti-corrosion stainless steel #304 construction
- High efficiency, non-sparking blower wheel
- Transparent Lexan doors, with easy access clasps
- Low-cost mist eliminator afterfilters



*Custom configurations available on request.

Options



Ducted downdraft table in four standard sizes



WV-55 Sludge-Vac Removal Vacuum



High-efficiency Hepa Afterfilter kit (MERV 17)



Bag strainer system to remove dust and sludge

Dimensions **

Model	Inlet Collar Diameter (in.)	Footprint (in.)			Net Weight (lbs.)	Water	
		Length [b]	Height [C]	Width [d]		Supply (in.)	Drain (in.)
WX-1200	6	34	86	32	395	1/2" NPT	1 1/2" NPT
WX-3000	10	47	109	44	738	1/2" NPT	1 1/2" NPT
WX-5000	16	61	117	57	923	1/2" NPT	1 1/2" NPT
WX-6500	16	67	129	67	1185	1/2" NPT	1 1/2" NPT

1. Water Level is marked on each unit.

** Product dimensions are based on base-models and may vary depending on selected product features. Please contact us for an accurate shipping quote.

Technical Specifications

Model	Water Fill System	Nominal Airflow (CFM)	Tank Capacity (Gallons)	Motor (H.P.)	Power				Noise @5ft. (dB)
					Phase (hz)	@230V (amps)	@460V (amps)	@575V (amps)	
WX-1200	auto	1200	16	3.0	3P / 60Hz	9.6	4.8	3.9	74
WX-3000	auto	2000-3500	40	5.0	3P / 60Hz	15.2	7.6	6.1	78
WX-5000	auto	3000-5000	80	10.0	3P / 60Hz	28.0	14.0	11.0	78
WX-6500	auto	4000-6500	80	15.0	3P / 60Hz	34.0	16.9	14.0	80

1. For 1200, Airflow @ 2" external static pressure.

2. For WX-3000, WX-5000, WX-6500, Airflow @ 2.5" external static pressure.

HEAD OFFICE

945 Lowndes Hill Rd.
Greenville, SC 29607

1031 Chuck Dawley Blvd.
Building A Suite 2
Mt. Pleasant, SC 29494

1448 Brawley School Road
Mooresville, NC 28117

200 Centreport Drive
Suite 340
Greensboro, NC 27409

4008 Barrett Drive
Suite 106
Raleigh, NC 27609

WV-55 SLUDGE VACUUM



The WV-55 sludge vacuum offers a fast, easy way to clean dust, chips and swarf out of wet dust collectors and other equipment. The WV-55 vacuums water along with the sludge and collects the solids in a reusable 5 micron filter bag. The vacuum can then pump back out only the water for reuse in the wet collector. The sludge vac is ideal for use on machines with sumps, parts washers or any storage containers with contaminated liquids and reduces manual maintenance requirements.

The WV-55 vacuum uses a compressed air powered reversible drum vac that can fill or empty a 55 gallon drum in less than two minutes. Simply set the reversible drum vac pump to “fill” for it to quickly vacuum the liquid and solids. Once the wet collector is empty, set the pump and directional valve to “empty” for it to pump out the liquid for reuse. All the dust, chips and other solids will be collected inside the reusable filter bag for easy disposal.

Features:

- Pump assembly with directional flow valve
- 55 gallon drum
- 10' chemical resistant hose
- 20' compressed air hose
- Aluminum chip wand
- 2 reusable 5 micron filter bags
- Drum dolly

Benefits:

- Removes unwanted solids from liquid
- No moving parts, No motors to clog or wear out
- Self priming stainless steel pump
- Safe - no electricity
- Built-in pressure/vacuum relief
- Spill free - auto safety shutoff
- Quiet



How the WV-55 Sludge Vacuum works

The vacuum hose is attached to the barbed connection of the WV-55. The directional flow control valve on top of the drum and knob on the pump are set to the "fill" position. The air supply valve is opened to permit compressed air at 80-100 PSIG (5.5 - 6.9 BAR) to flow through the pump which pulls the liquid through the hose, then into the reusable filter bag. When all liquid is in the drum, the air supply is turned off. The filtered liquid can then be pumped out by setting the directional flow control valve on top of the drum and knob on the pump to the "empty" position. Once the air supply valve is opened, the air pushes the liquid back through the hose while all solids remain in the reusable filter bag.

Warning: Do not use any material that has a flash point or with flammable liquids such as fuel oil, alcohol, mineral spirits, gasoline or kerosene.



Specifications & Dimensions**

Model	Air Consumption		Water Flow Rate		Sound Level	Net Weight (lbs.)	Product Dimensions (in.)		
	SCFM	SLPM	GPM	LPM			Width (in.)	Height (in.)	Length (in.)
WV-55 Sludge Removal Vacuum									
WV-55	19	538	30	114	86 dBA	45	24	48	24

*The filter bag included with the system provides 5 micron filtration.

** Product dimensions are based on base-models and may vary depending on selected product features. Please contact us for an accurate shipping quote.

HEAD OFFICE

945 Lowndes Hill Rd.
Greenville, SC 29607

1031 Chuck Dawley Blvd.
Building A Suite 2
Mt. Pleasant, SC 29494

1448 Brawley School Road
Mooresville, NC 28117

200 Centreport Drive
Suite 340
Greensboro, NC 27409

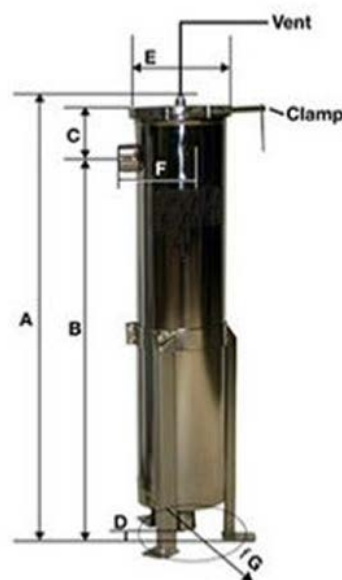
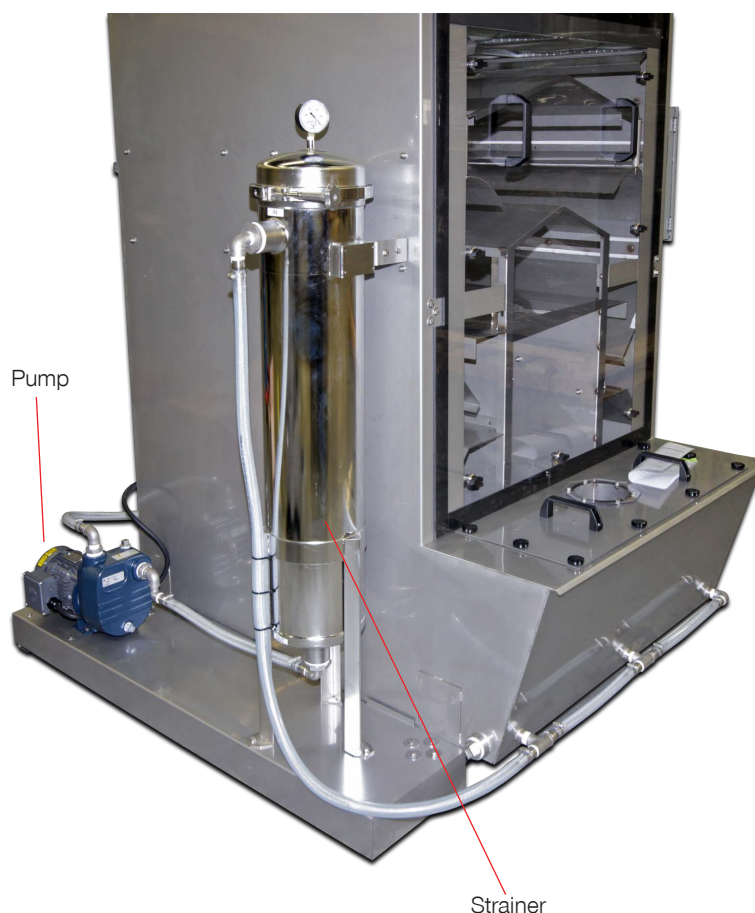
4008 Barrett Drive
Suite 106
Raleigh, NC 27609

BAG STRAINER SYSTEM

The Diversitech Bag Strainer System provides an automated, easy way to remove sludge from Diversitech's Typhoon WX Series of wet dust collectors. The pump draws in water and particulate from the wet collector reservoir and pumps the material through a bag strainer where the sludge settles before clean water is pumped back into the collector.

Benefits:

- Automatically removes sludge from water tank
- Easy disposal of collected sludge
- Self-priming centrifugal pump
- Empty Bag Alert



Dimensions

- A: 38 - 7/8" - 52 - 5/8"
 B: 33 - 3/4" - 47 - 1/2"
 C: 3 - 15/16"
 D: 0" - 13 - 3/4"
 E: 8"
 F: 5 - 3/8"
 G: 12 - 5/8"

HEAD OFFICE

945 Lowndes Hill Rd.
Greenville, SC 29607

1031 Chuck Dawley Blvd.
Building A Suite 2
Mt. Pleasant, SC 29494

1448 Brawley School Road
Mooresville, NC 28117

200 Centreport Drive
Suite 340
Greensboro, NC 27409

4008 Barrett Drive
Suite 106
Raleigh, NC 27609

TYPHOON

CENTRAL WET DUST COLLECTOR



Sanding



Grinding



Deburring

The stainless steel Typhoon™ central wet dust collector excels at capturing combustible/hazardous dust from your plant air. The blower draws air through DiversiTech's proprietary water-tree baffle design, creating a cascading water effect that removes particles as small as 3 micron from the airstream.

The Typhoon™ central wet dust collector works by drawing dust-laden air in through the inlet on the back of the scrubber. A tank of water and a series of internal baffles known as a "water tree" filter the combustible dust via engineered water streams. Dust is filtered through contact with water droplets and contained in the bottom of the collector for safe removal at necessary maintenance intervals. Water levels are automatically controlled with valves and sensors, including interlock functions to meet NFPA and OSHA codes.

The unit can be easily cleaned with an optional wet-vacuum making routine service fast and easy. For applications where the dust generation is further away from the collector, empty downdraft tables or extraction arms are popular options.

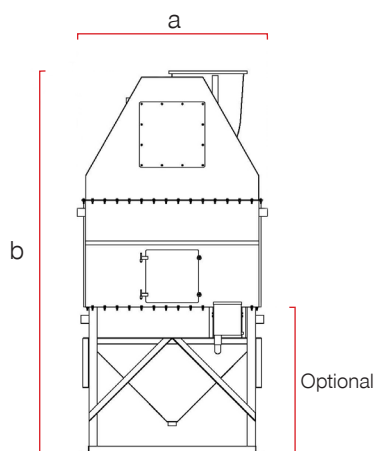
Benefits:

- Capture-at-source for cleaner air
- Complies with NFPA guidelines for combustible dust

Features:

- Anti-corrosion Stainless Steel #304 Construction
- Ultrasonic Auto-fill Water Control System
- Floor or Hopper floor stand configurations
- Non Sparking Blower Wheel

Options



Optional Hopper and Floor Stand
*Custom configurations available on request.



Hydrogen Vent Fan
(Required for combustible metal dust)



WV-55 Sludge-Vac
Removal Vacuum



Upblast Silencer



HEPA afterfilter with Frame

Dimensions **

Model	Inlet Collar Diameter (in.)	Footprint			Net Weight (lbs.)	Water	
		Length [c]	Height [b]	Width [a]		Supply (in.)	Drain (in.)
TY-8000	20	7'-7"	15'-8"	7'-9"	4000	1/4" NPT	2" NPT
TY-10000	20	7'-7"	15'-8"	7'-9"	4000	1/4" NPT	2" NPT
TY-12000	20	7'-7"	15'-8"	7'-9"	4000	1/4" NPT	2" NPT

1. Water Level is marked on each unit.

** Product dimensions are based on base-models and may vary depending on selected product features. Please contact us for an accurate shipping quote.

Technical Specifications

Model	Water Fill System	Nominal Airflow (CFM)	Tank Capacity (Gallons)	Motor (H.P.)	Power				Noise @5ft. (dB)
					Phase (hz)	@230V (amps)	@460V (amps)	@575V (amps)	
TY-8000	auto	8000	450	30	60	80	40	32	100
TY-10000	auto	10000	450	40	60	104	52	41	100
TY-12000	auto	12000	450	50	60	130	65	52	102

1. Nominal Airflow @ 7" external static pressure.

HEAD OFFICE

945 Lowndes Hill Rd.
Greenville, SC 29607

1031 Chuck Dawley Blvd.
Building A Suite 2
Mt. Pleasant, SC 29494

1448 Brawley School Road
Mooresville, NC 28117

200 Centreport Drive
Suite 340
Greensboro, NC 27409

4008 Barrett Drive
Suite 106
Raleigh, NC 27609

DUST CONTROL BOOTH

Engineered & Manufactured to any size by Diversitech



Welding



Sanding



Grinding

Diversitech's Dust Control Booth are designed to safely capture and filter airborne contaminants from metal finishing, fiberglass, composites and metal fumes.

The Dust Booth modules (DBMs) serve as the booth's filtration unit, and range in size from 4 cartridge 3000 CFM, 6 cartridge 4500 CFM to 8 cartridge 6000 CFM. The built-in reverse pulse cleaning system in the dust control booth comes standard, reducing the maintenance required and extending filter longevity.

Once the dust booths are installed, smoke, dust, and other airborne contaminants are safely drawn to the back of the booth, away from the operator's respiratory zone.

Features:

- Front access dust-drawer for easy maintenance
- Booths are self-supporting
- Modules are freestanding

Benefits:

- Customizable and modular
- Capture-at-source for Cleaner Air
- Complies with OSHA guidelines for controlling weld fumes



How The Dust Booth Collector Works

Airborne dust enters the backdraft module and is run through a set of cartridge filters. The unit is programmed to self-clean the filters, using a reverse pulse jet to dislodge accumulated particulate. The dust then settles in a drawer below the unit for quick disposal.

Dimensions **

Model	Net Weight (lbs.)	Product Dimensions (in.)		
		Width	Height	Depth
Dust Control Booth				
EBM-4-050T	1047	38	89	44
EBM-6-075T	1311	55	89	44
EBM-8-100T	1596	71	89	44

** Product dimensions are based on base-models and may vary depending on selected product features. Please contact us for an accurate shipping quote.

Technical Specifications

Model	Airflow (CFM)	Motor (H.P.)	Primary Filter Type	Blower	Power			
					Phase (hz)	@230V (amps)	@460V (amps)	@575V (amps)
Dust Control Booth								
EBM-4-050T	3000	5.0	(4) MERV 11	TEFC	3P / 60Hz	12.8	6.4	4.6
EBM-6-075T	4000	7.5	(6) MERV 11	TEFC	3P / 60Hz	17.0	8.5	7.2
EBM-8-100T	6000	10	(8) MERV 11	TEFC	3P / 60Hz	24.0	12.0	9.6

HEAD OFFICE

945 Lowndes Hill Rd.
Greenville, SC 29607

1031 Chuck Dawley Blvd.
Building A Suite 2
Mt. Pleasant, SC 29494

1448 Brawley School Road
Mooresville, NC 28117

200 Centreport Drive
Suite 340
Greensboro, NC 27409

4008 Barrett Drive
Suite 106
Raleigh, NC 27609

WET DUST COLLECTION BOOTH

Engineered & Manufactured to any size by Diversitech



Diversitech's Wet Dust Collection Booth offers a simple, customizable and turnkey solution to handle combustible dust collection for larger work pieces. The stainless steel Wet Dust Collectors serve as the booth's filtration system, and range in size from 3000CFM, 5000CFM, and 6500CFM units. A standard auto-level water control system works to reduce maintenance and increase your production uptime

Once the booth is installed, dust, and other airborne contaminants are safely drawn to the back of the booth, away from the operator's respiratory zone. For applications involving combustible dusts such as magnesium, the collectors can be set-up to vent hydrogen gas outside of your facility as the metal oxidizes in water.

Features:

- Wet Collector Stainless steel construction
- Auto-level Water Control System
- Low cost Mist Eliminator Filters

Options:

- Dust-proof Light Kits
- Sludge Removal Vacuum with Hose & Drum
- Self-cleaning strainer system to remove dust and sludge

Benefits:

- Customizable and modular, makes for versatile workspaces
- Capture-at-source for Cleaner Air
- Complies with NFPA guidelines for controlling combustible dust



How The Wet Dust Collector Works

Dust-laden air enters the scrubber and is run through an aqueous bed of water and a series of internal baffles to filter the combustible dust via engineered water streams. Dust is contained in the bottom of the collector for safe removal at necessary maintenance intervals. Water levels are automatically controlled with valves and sensors, including interlock functions to meet NFPA and OSHA codes.

Dimensions **

Model	Inlet Collar Diameter (in.)	Footprint (in.)			Net Weight (lbs.)	Water	
		Length [b]	Height [C]	Width [d]		Supply (in.)	Drain (in.)
WX-1200	6	34	86	32	395	1/2" NPT	1 1/2" NPT
WX-3000	10	47	109	44	738	1/2" NPT	1 1/2" NPT
WX-5000	16	61	117	57	923	1/2" NPT	1 1/2" NPT
WX-6500	16	67	129	67	1185	1/2" NPT	1 1/2" NPT

1. Water Level is marked on each unit.

** Product dimensions are based on base-models and may vary depending on selected product features. Please contact us for an accurate shipping quote.

Technical Specifications

Model	Water Fill System	Nominal Airflow (CFM)	Tank Capacity (Gallons)	Motor (H.P.)	Power				Noise @5ft. (dB)
					Phase (hz)	@230V (amps)	@460V (amps)	@575V (amps)	
WX-1200	auto	1200	16	3.0	3P / 60Hz	9.6	4.8	3.9	74
WX-3000	auto	2000-3500	40	5.0	3P / 60Hz	15.2	7.6	6.1	78
WX-5000	auto	3000-5000	80	10.0	3P / 60Hz	28.0	14.0	11.0	78
WX-6500	auto	4000-6500	80	15.0	3P / 60Hz	34.0	16.9	14.0	80

1. For 1200, Airflow @ 2" external static pressure.

2. For WX-3000, WX-5000, WX-6500, Airflow @ 2.5" external static pressure.

HEAD OFFICE

945 Lowndes Hill Rd.
Greenville, SC 29607

1031 Chuck Dawley Blvd.
Building A Suite 2
Mt. Pleasant, SC 29494

1448 Brawley School Road
Mooresville, NC 28117

200 Centreport Drive
Suite 340
Greensboro, NC 27409

4008 Barrett Drive
Suite 106
Raleigh, NC 27609

WS WELD BOOTH

CUSTOMIZABLE WELDING BOOTH



Diversitech's WS Weld Booths are the ideal platform to contain and capture weld fume from weld training and production facilities. Booths are modular allowing unlimited configuration and custom sizes to suit any welding environment. The booths can be outfitted with a wide variety of available options, including weld jigs, coupon stands, anti-flash UV curtains, work tables and light kits.

WS Weld Booths the optimal solution for welding schools, welding labs, technical and community colleges. Weld booths can be ducted to a central fume collection system or outfitted with self-contained fume extractors, hoods and filters to remove smoke and dust from the student's breathing zone.

Benefits:

- Capture-at-source for cleaner air
- Compact modular design
- Complies with OSHA guidelines for controlling weld fumes

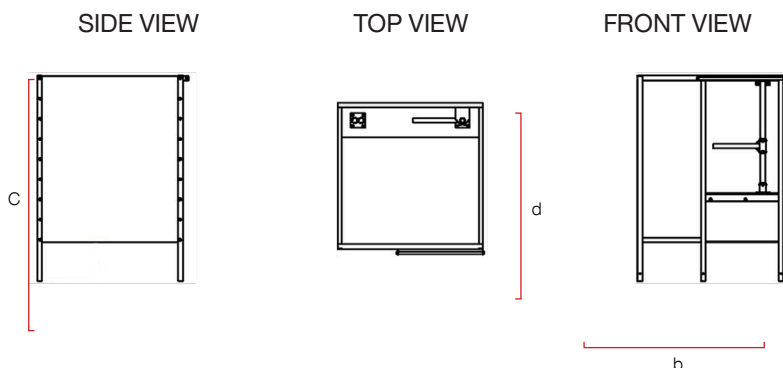
Features:

- Customizable work surface
- Powder coated steel construction
- Anti-flash UV strip curtain

Options:

- Height Adjustable Shelving
- Gas & Air Lines
- Electrical Outlets
- Backdraft Hoods
- Fume Extraction Arms
- Dust-proof light kits
- Locker Box

Fume Extraction Options



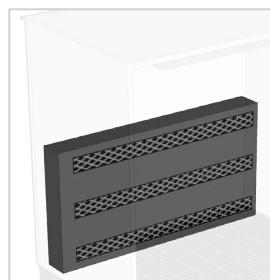
**Custom configurations available on request.*



FRED Eco Fume Extractor Arm



Telescopic Arm



Backdraft Hood

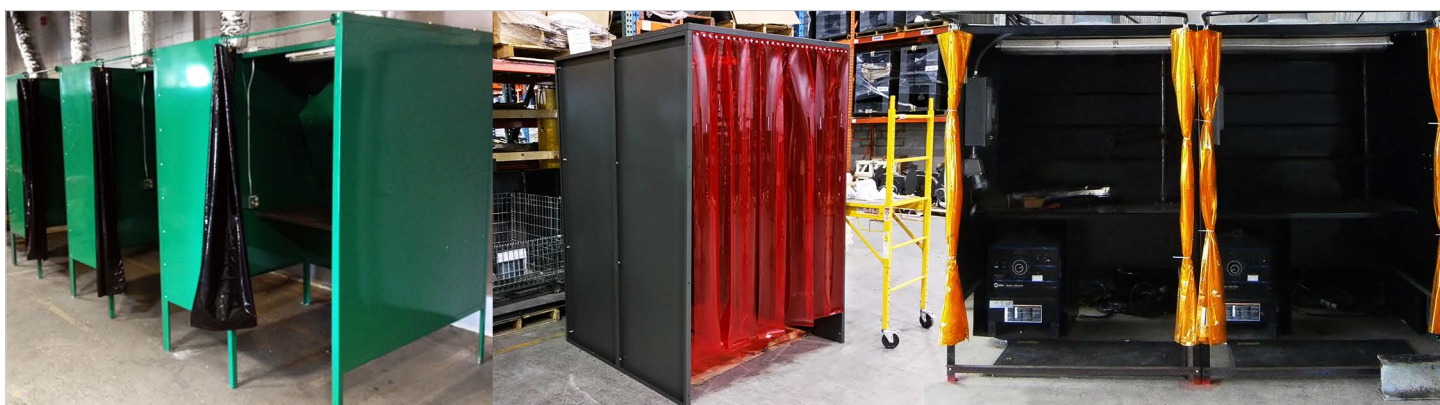


Central Dust Collector

Dimensions **

Model	Net Weight (lbs.)	Product Dimensions (in.)		
		Width (b)	Height (C)	Depth (d)
WS Weld Booth				
WS-4x4-8	435	48	96	48
WS-5x5-8	520	60	96	60
WS-6x6-8	585	72	96	72

*** Product dimensions are based on base-models and may vary depending on selected product features. Please contact us for an accurate shipping quote.*



HEAD OFFICE

945 Lowndes Hill Rd.
Greenville, SC 29607

1031 Chuck Dawley Blvd.
Building A Suite 2
Mt. Pleasant, SC 29494

1448 Brawley School Road
Mooresville, NC 28117

200 Centreport Drive
Suite 340
Greensboro, NC 27409

4008 Barrett Drive
Suite 106
Raleigh, NC 27609

MOBILE WELDING TRAILER

Diversitech Mobile Welder Certification Trailer With Downdraft Tables or Fume Extractors

Diversitech has designed custom mobile welding certification trailers for a variety of community colleges and technical training schools to certify and train welders on proper technique and procedures. Welding trailers can range in size from small utility trailers to large 53' trailers setup with multiple welding stations. A properly designed trailer will remove weld fumes, dusts, and other airborne contaminants to protect students and instructors from inhaling high concentration levels of fumes in a confined space.

The welder certification trailer can be outfitted with different welding fume extractors depending upon the application. Many customers opt for downdraft tables for hands free capture at source, while other applications call for welding booths with wall mounted fume collectors such as the FRED Eco.

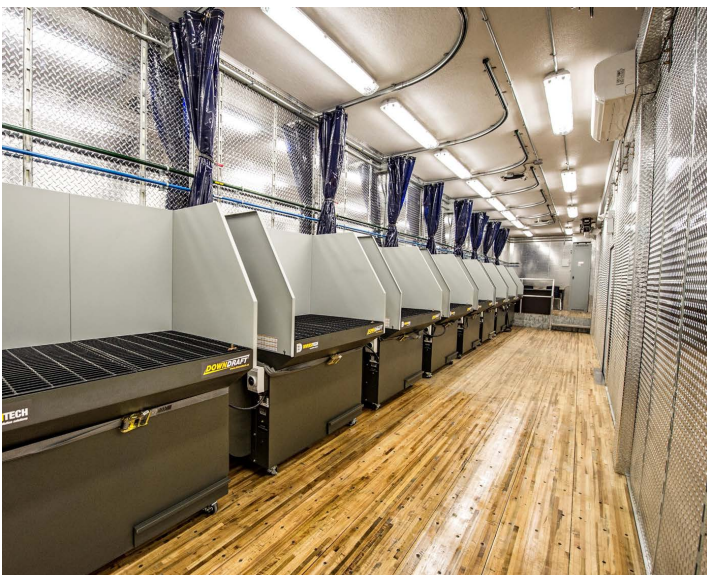
Whether performing MIG, TIG, Stick, Oxy Cutting, Plasma Cutting, Grinding & Deburring or for any other application, Diversitech has the solution for your mobile welding lab requirements.

Features:

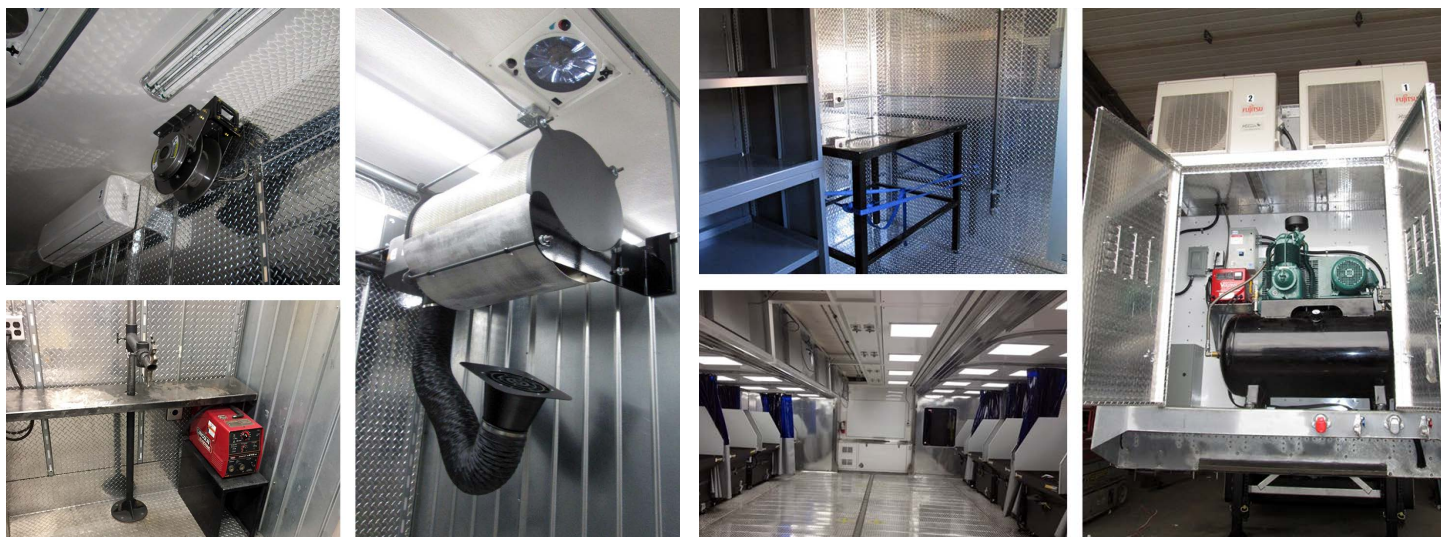
- Up to 8 welding stations with fume extractors
- Work-holding fixtures, jigs and coupon stands available
- Shielding gas hookups and connections
- Compressor, air conditioner and heat pump available
- Expandable trailers with dual slideouts provide up to 1100 square feet of space

Benefits:

- Seamless integration of trailer and fume extraction system
- Lower energy costs in heated or air-conditioned trailers
- Complies with OSHA guidelines for controlling weld fumes



WELDING • GRINDING • SANDING • PLASMA CUTTING



Specifications

Model	Airflow (CFM)	Face Velocity (FPM)	Arm/Hose Length (ft.)	Motor (H.P)	Input Power (v/p/hz)	Noise @5ft. (dB)
Mobile Welding Trailer Fume Extraction Equipment						
Fred ECO	1200	---	10 or 13	1.5	120v/1/60Hz	70 dB @ 5ft.
Mini DD	1200	250	---	1.0	120v/1/60Hz	70 dB @ 5ft.
DD 2x4	1500	340	---	1.5	120v/1/60Hz	70 dB @ 5ft.

53' Mobile Welding Trailer Lab



HEAD OFFICE

945 Lowndes Hill Rd.
Greenville, SC 29607

1031 Chuck Dawley Blvd.
Building A Suite 2
Mt. Pleasant, SC 29494

1448 Brawley School Road
Mooresville, NC 28117

200 Centreport Drive
Suite 340
Greensboro, NC 27409

4008 Barrett Drive
Suite 106
Raleigh, NC 27609

D MISTER

VERTICAL OIL MIST COLLECTOR



The D Mister Oil Mist Collector excels at removing oil mist, smoke and vapor from various applications in the machining industry. The D Mister collectors can be connected directly via ductwork, to CNC machines to safely and efficiently extract airborne, oil mist and smoke.

Diversitech's Oil Mist collectors are designed with a vertical configuration to allow for the drainage and reuse of oil-based coolants and lubricants. Fiberglass media bags and an optional HEPA filter provide high efficiency filtration for smoke and synthetic coolants.

Benefits:

- Dual or Quad filter configurations available
- Capture-at-source for cleaner air
- Complies with OSHA guidelines for controlling oil mist

Options:

- Backward Inclined Fan
- 24" High Floor Stand
- Manometer
- Odor Adsorption Kits
- HEPA Afterfilter
- Motor Starter (Disconnect)
- Eyebolts - Brackets - Silencer



How The D Mister Oil Mist Collector Works

The unit's standard configuration uses three stages of filtration to separate the mist, smoke and fumes from the air. Several filter combinations are available depending on application. Airflow ranges are from 1000 to 8000 CFM. The unit can be wall mounted on a stand or hung from the ceiling. The motor can be direct or belt driven with forward curved or high pressure composite blowers. All D Misters include drain fittings for extract coolant to reclaim lubricants.

Technical Specifications

Model	Nominal Airflow (CFM)	Motor (H.P.)	Prefilter	Secondary Filter	Final Filter	Blower	Power			
							Phase (hz)	@230V (amps)	@460V (amps)	@575V (amps)
D Mister Oil Mist Collector										
DM 2000V	2000	2	(1) 2" Impinger	(1) 2" Mist Eliminator	(1) 95% Bag Filter	Backward Inclined	3P / 60Hz	5.8	2.9	2.3
DM 4000V	4000	3	(2) 2" Impinger	(2) 2" Mist Eliminator	(2) 95% Bag Filter	Backward Inclined	3P / 60Hz	8.6	4.3	3.4

Dimensions

Model	Net Weight (lbs.)	Drain (in.)	Product Dimensions (in.)			Shipping Dimensions (in.)			Gross Weight (lbs.)
			Width	Height	Depth	Width	Height	Length	
D Mister Oil Mist Collector									
DM 2000V	285	1.5 NPT	26	110.5	24	33	38	117	485
DM 4000V	625	1.5 NPT	48	110.5	26	63	38	120	870

HEAD OFFICE

945 Lowndes Hill Rd.
Greenville, SC 29607

1031 Chuck Dawley Blvd.
Building A Suite 2
Mt. Pleasant, SC 29494

1448 Brawley School Road
Mooresville, NC 28117

200 Centreport Drive
Suite 340
Greensboro, NC 27409

4008 Barrett Drive
Suite 106
Raleigh, NC 27609

AIRHAWK

CARTRIDGE DUST COLLECTORS



The Airhawk Series of Cartridge Dust Collectors from Diversitech features an innovative, modular design that effectively eliminates dust, smoke and other airborne contaminants from your work environment. Its durable, heavy-duty powder-coated steel construction can withstand continuous operation industrial applications.

The Airhawk's vertical filter design allows the powerful, reverse pulse cleaning system to separate dust from the filters while preventing dust re-entrainment with baffles below, resulting in a cost-effective filter system to operate and maintain. Each filter cartridge is pulse-cleaned individually with a powerful turbo-nozzle, which ensures the maximum amount of material is blown off each filter.

Features:

- Vertical Cartridge filters (Dust is blown off the filter instead of accumulating on the top surface)
- Standard open-pleat Nanotech MERV 15 nanofiber filters
- Non re-entrainment baffles
- Automatic reverse pulse cartridge cleaning system
- Hopper and floor stand or low-profile dust drawer configurations
- Heavy Duty 10-gauge main frame construction with 12-gauge steel panels

Optional Accessories:

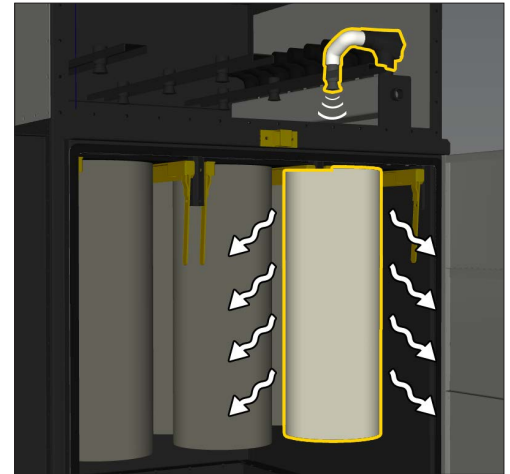
- HEPA afterfilter
- Silencer
- Dust drawer
- Spunbond polyester filters
- Abort and Blowback damper
- Explosion vent
- Spark Arrestor
- Catwalk platform and ladder
- Fire detection and suppression system
- Variable Frequency Drive



WELDING • GRINDING DUST • PLASMA CUTTING • SANDING & FINISHING • BLASTING • FOOD PROCESSING

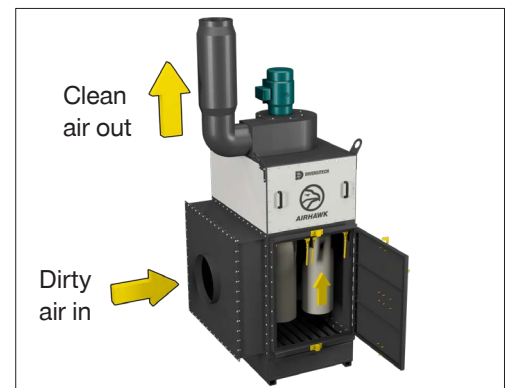
Airhawk Advantages

- Modular for unlimited number of filters
- Continuous operation on line and off line reverse pulse
- Each filter is pulsed separately which reduces internal static pressure extending filter life and overall dust collector performance
- Shipped in modules to reduce freight costs
- Many different accessories available to meet NFPA and OSHA guidelines



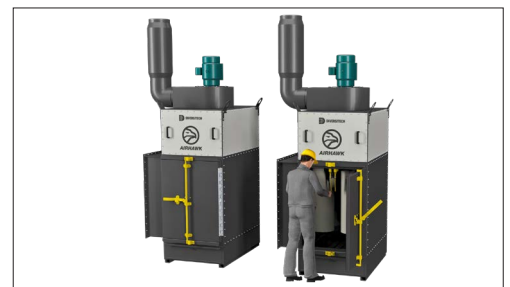
Direct - A - Flow™ Inlet

- Inlet baffle separates larger dust particulates before they reach the filters by directing the dust into the hopper or drawer
- Prevents large particulates from directly impacting the filters



Fast and Simple Filter Replacement

- Single access, no tools required
- Clamp bars provide easy filter clamping and sealing
- No doors nor knobs to be removed



Fan Specifications

- Direct Drive/Backward Inclined blower wheel
- TEFC VFD compatible premium efficiency motor, saves energy



Available Options

Floor Stand & Hopper

- 54" clearance under hopper discharge flange
- Feet with bolt holes to anchor to a concrete pad



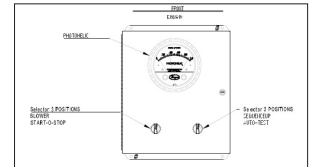
Low Profile Dust Drawer

- Reduces height by 59" from drawer to the hopper
- For low dust loading applications



Soft Start

- NEMA 12 enclosure, Magnetic SOFT START motor starter, Fuses, Thermal overload
- Step down transformer, Illuminated on/off buttons, Three position selector switch
- Integrated pulse sequencer controller board, Rotary disconnect, CSA approved



HEPA Afterfilters

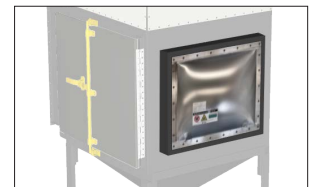
- MERV 17 efficient HEPA filter captures particles at the submicron level
- Provides the highest level of filtration efficiency 99.97% at 0.3 micron
- Hot-melt separator-style glass media pack
- Actual size: 24" x 24" x 11½"
- Maximum operating temperature: 175° F / 80° C



Combustible Dust Accessories

Explosion Vents

Domed rupture disks manufactured from 304SS, 11.6 sq. ft. (1.08 sq. meters) each. Standard vent area is suitable for Class ST1 dust with a Kst value below 200 bar*m/sec. The standard vents are designed for ambient temperature conditions. The maximum operating pressure is negative 3 PSI. Consult the factory for operating conditions other than those stated.



Blowback Damper Specifications:

- 12-gauge steel construction, flange bearings, cover type access door
- Inlet and outlet bolttable ring, installed on inlet
- Ensure no re-entrainment when the blower is off
- Ensure there is a seal if a fire occurs, stopping the smoke from returning to the shop via the ductwork



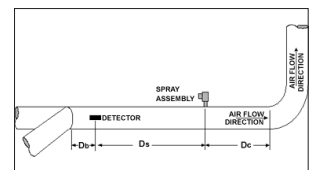
Abort Damper Specifications:

- 12-gauge steel construction, electronically controlled hinged drop plate
- Used to divert & expel air back into the atmosphere as soon as there is detection of sparks or flames
- Installed on the return duct

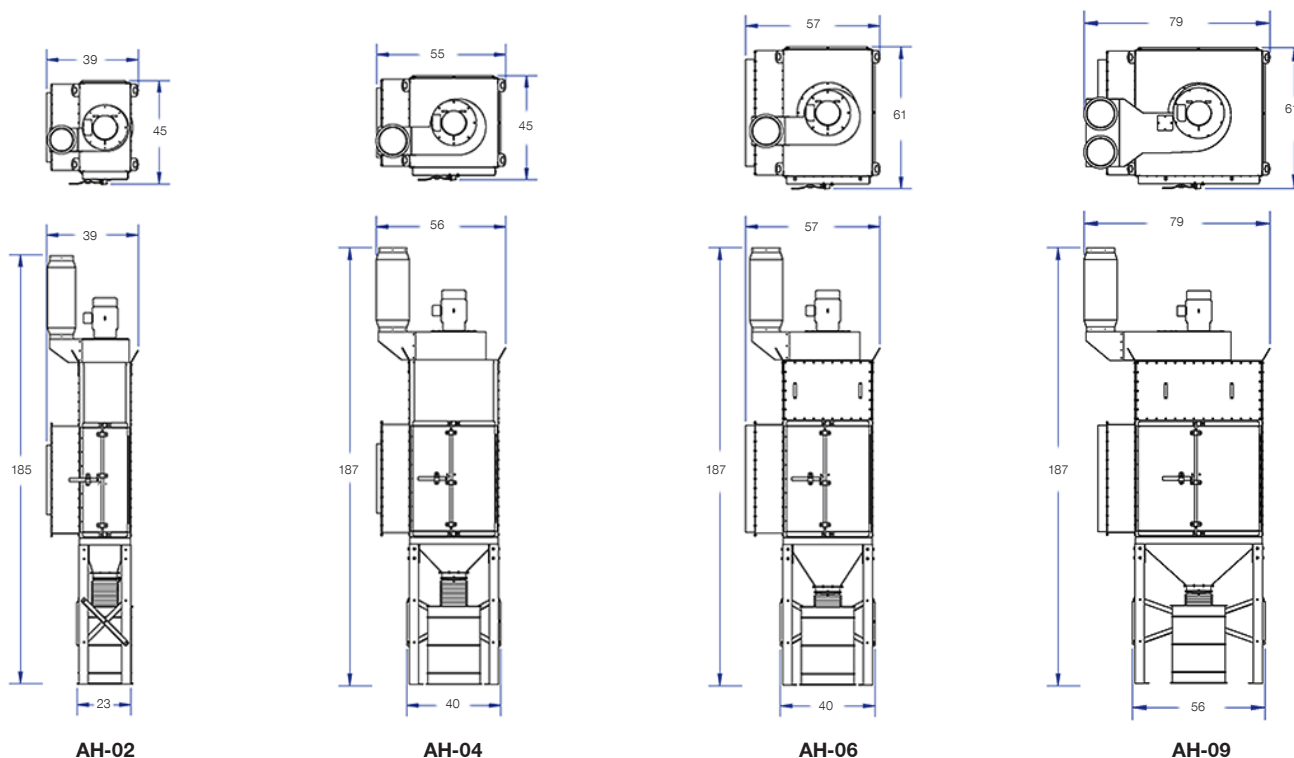


Water-Based Fire Detection & Suppression System Specifications:

- Single Zone Control Panel, Dual High Sensitivity Infra-Red Spark Detector with flange mount
- Sense check self-test feature, spray assembly - solenoid controller water
- Spray assembly and strainer, supervised water shutoff valve
- 24 Volt DC Alarm Horn w/ 4.5 Amp backup batteries



Dimensions



Technical Specifications

Model	Nominal Airflow (CFM)	Motor Size		Cartridges / Filters		
		(H.P)	(p/hz)	Qty.	Area (SQFT)	Type
AH-02	1200	1.5	1/60	2	630	MERV 15 Nanofiber
	1800	3.0	3/60			
AH-04	3000	5.0	3/60	4	1280	MERV 15 Nanofiber
	4000	7.5	3/60			
AH-06	4000	7.5	3/60	6	1890	MERV 15 Nanofiber
	5000	10.0	3/60			
AH-09	6500	15.0	3/60	9	2835	MERV 15 Nanofiber
	> 6500	Call	Call			
AH-Custom				IMPORTANT : If your equipment was purchased after <u>November 15, 2018</u> , a Replacement Filter Card, featuring filter details and simple instructions to easily order replacement filters, will be located on the filter door.		

HEAD OFFICE

945 Lowndes Hill Rd.
Greenville, SC 29607

1031 Chuck Dawley Blvd.
Building A Suite 2
Mt. Pleasant, SC 29494

1448 Brawley School Road
Mooresville, NC 28117

200 Centreport Drive
Suite 340
Greensboro, NC 27409

4008 Barrett Drive
Suite 106
Raleigh, NC 27609